



# VMS User Manual

# Table of Contents

1	Overview .....	3
1.1	Description .....	3
1.2	Installation environment.....	3
2	Installation .....	4
2.1	Preparation .....	4
2.2	Installation .....	4
3	Functional Specification .....	5
3.1	Log-in page.....	5
3.2	Wizard .....	5
3.3	Device Manager .....	6
3.3.1	Search IP in LAN and Add.....	6
3.3.2	Add Group .....	7
3.3.3	Add devices manually .....	7
3.3.4	Close window .....	8
3.4	Monitoring .....	8
3.4.1	View .....	10
3.4.2	Other Features .....	11
3.5	Playback .....	12
3.6	Record Settings .....	13
3.6.1	Storage settings.....	13
3.6.3	Record settings.....	13
3.7	Log.....	13
3.8	Alarm info.....	14
3.9	Device Config .....	15
3.9.1	Network .....	16
3.9.1.1	Set device's IP.....	16
3.9.1.2	PPPOE.....	16
3.9.1.3	Email .....	16
3.9.1.4	FTP.....	17
3.9.1.5	RTSP .....	25
3.9.1.6	Cloud .....	25
3.9.1.7	DDNS .....	25
3.9.1.8	DAS.....	26
3.9.2	Encode.....	27
3.9.3	Camera Parameters.....	27
3.9.4	System.....	28
3.9.5	Version Info .....	28
3.9.6	Exception Handling .....	29
3.9.7	Video Detect .....	29
3.9.8	Disk Manager .....	30
3.9.9	Record Config.....	30
3.10	Alarm Config .....	31

3.11	Tour .....	31
3.12	System Config.....	32
3.13	Extensions .....	32

# 1 Overview

## 1.1 Description

VMS is a client software solution for XVR DVR products. The suppressible toolbar, succinct GUI and rich functionality make VMS a user-friendly and intelligent monitoring management software which can be used in various scenarios.

VMS supports 2-way-talk with DVR devices, instantaneous screenshots, video previews with multiple devices concurrently, and intelligent tour plans to displace manual operations.

You can easily search video files that have not only been recorded on the PC (Local side) but also on remote devices.

Different alarm features can meet customer's every need.

## 1.2 Installation environment

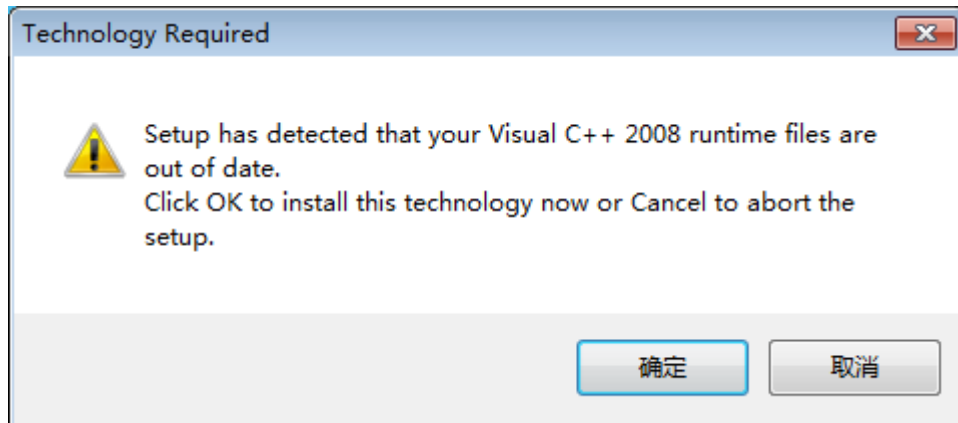
Operating system:	Windows system( it would support Mac and Linux system in subsequent version)
CPU:	Above 2.4GHz
Memory:	Above 1GB
Graphics:	Discrete graphics

- In theory the preview number is  $64 * 4$ . The actual preview number is limited by the properties of the server, the resolution of devices (bit rate) ,network bandwidth etc.

## 2 Installation

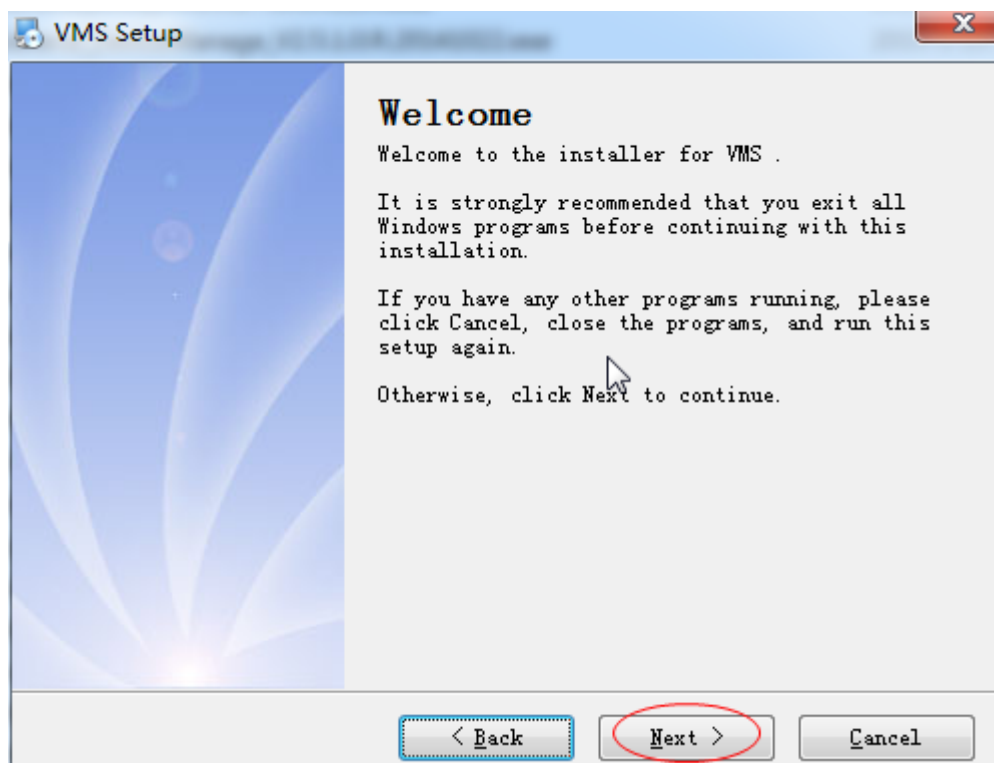
### 2.1 Preparation

When installing the VMS, you may be prompted to install Visual C++ 2008 first. This is to ensure your PC has installed all of the necessary library files for VMS. So if you see the following pop-up notification, please click yes to install it.



### 2.2 Installation

After installing Visual C++ 2008, choose the appropriate language and start installing the software.



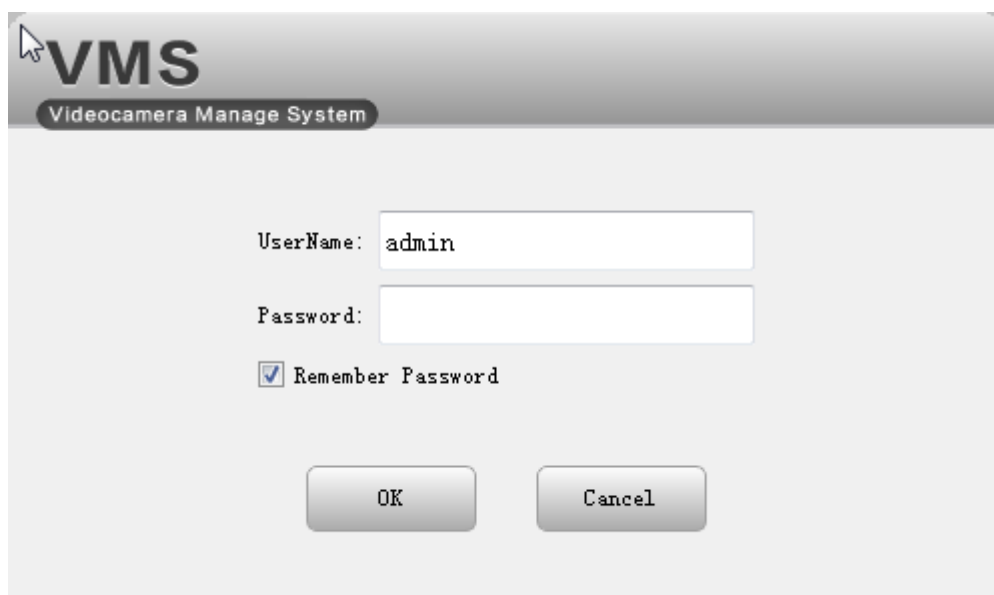
Double click the shortcut icon on the desktop to start the program:



## 3 Functional Specification

### 3.1 Log-in page

Upon starting VMS the following login screen will appear:

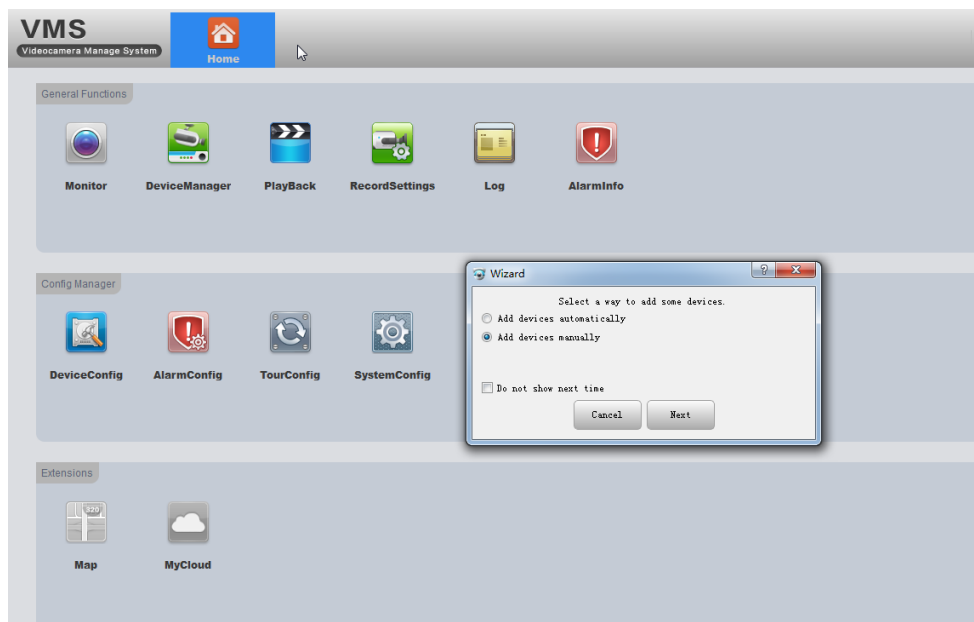
The login screen has a grey header bar with the 'VMS' logo and a mouse cursor icon on the left. Below the header, the text 'Videocamera Manage System' is displayed. The main area is white and contains a 'UserName:' label followed by a text box containing 'admin'. Below this is a 'Password:' label followed by an empty text box. A checkbox labeled 'Remember Password' is checked. At the bottom, there are two buttons: 'OK' and 'Cancel'.

Input user name and password, click OK.

### 3.2 Wizard

There is a configuration wizard when you open the software for the first time. It is to select a way to add devices:

Add devices automatically:	auto add devices (in the same LAN) to VMS.
Add devices manually:	when you choose this way, you need to go to 'Device Manager' to add devices manually.
Do not show next time:	Tick it, this wizard won't show again
Next:	Click it, it will go to the 'Device Manager' page.
Cancel:	To exit the wizard



### 3.3 Device Manager

- If you choose “add devices automatically” in wizard, it will come to this page and countdown to auto add devices.
- If you choose “Add devices manually” in wizard, you can either choose the discovered devices to add directly (as shown in the following picture) or you can click “Manual add” to add manually (See 3.3.3).

#### 3.3.1 Search IP in LAN and Add

**Has been discovered devices:**

Name	CloudID	IP/Port	Vendor	Group
10.10.200.223	c0d3fb97e9b84571	10.10.200.223:34567	XM	support
10.10.200.222	eda302bb7324625f	10.10.200.222:34567	XM	support
10.10.200.15	6d674401dc12ad62	10.10.200.15:34567	XM	support
10.10.200.153	2033a25dee685131	10.10.200.153:34567	XM	support
10.10.200.149	985b7310f650b45	10.10.200.149:34567	XM	support
192.168.3.100	6d674401dc12ad62	192.168.3.100:34567	XM	Default Gr...
192.168.1.11	2033a25dee685131	192.168.1.11:34567	XM	Default Gr...
192.168.1.10	441bcc93f0786878	192.168.1.10:8001	XM	Default Gr...
192.168.1.10		192.168.1.10:34561	XM	Default Gr...
10.10.46.62	10c66695e5bb...	10.10.46.62:34567	XM	Default Gr...
10.10.45.61	23250f5a8c1c...	10.10.45.61:34567	XM	Default Gr...
10.10.44.30	2a2afd2b09e8...	10.10.44.30:34567	XM	Default Gr...
10.10.43.39	a2e4555ef3f0...	10.10.43.39:34567	XM	Default Gr...
10.10.43.32	9a57019933cb...	10.10.43.32:34567	XM	Default Gr...
10.10.43.26	17cc29f4aae...	10.10.43.26:34567	XM	Default Gr...
10.10.43.107	050f6893231e...	10.10.43.107:34567	XM	Default Gr...
10.10.42.239	dc9fba2ea14d...	10.10.42.239:34567	XM	Default Gr...
10.10.41.18	e2237d4460f8d11	10.10.41.18:34567	XM	Default Gr...
10.10.40.45	10000	10.10.40.45:34567	XM	Default Gr...
10.10.40.31	4a8d999bef3492	10.10.40.31:47102	XM	Default Gr...
10.10.40.11	c6dea8c51eeb799	10.10.40.11:34567	XM	Default Gr...
10.10.39.46	8613d673f3bb49	10.10.39.46:34567	XM	Default Gr...
10.10.39.34	3a89a09851ebf34	10.10.39.34:34567	XM	Default Gr...
10.10.39.20	9bd80018603ba75d	10.10.39.20:34567	XM	Default Gr...
10.10.38.46	8d59d67cb430c439	10.10.38.46:34567	XM	Default Gr...
10.10.38.14	39af5d032d771de4	10.10.38.14:34567	XM	Default Gr...

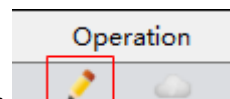
**Has been added devices:**

Name	CloudID	IP/Port	Group	Status	peratic
10.10.200.12	8470bd6d90f49bd7	10.10.200.12:34567	Default ...	Offline	

**Annotations:**

- Red arrows point to the 'Add' button in the 'Has been discovered devices' table.
- Red arrows point to the 'Remove' button in the 'Has been added devices' table.
- Red text: "tick one or two devices in the left discovered list, click 'Add' button, then it/they will be added to VMS (will show in the right added list)".
- Red text: "tick one or two devices in the right added list, click 'Remove' button, then it/they will be deleted from VMS (will disappear from the right added list)".
- Red text: "this function is defaultly enabled".
- Red text: "In order to login device, modify ip automatically".
- Red text: "manually added devices".
- Red text: "Manual Add", "Add Group", "add new group".
- Red text: "double click ip/port, it'll pop up a box as it shows, you can modify the device's net config".
- Red text: "double click to choose group".
- Red text: "Has been added devices:".
- Red text: "Has been discovered devices:".
- Red text: "1" (next to a device in the discovered list).
- Red text: "2" (next to a device in the added list).

- Sometimes you may find that the device is in the left discovered list but you can't add it to VMS. This means that your device is physically connected in the LAN but its IP is not in the same network segment with your PC. You can either use the function 3----modify IP automatically(it will auto change your device's IP to the same segment with your PC), or you can manually modify the device's IP by double click IP/port in the left list(as shown in the above picture).



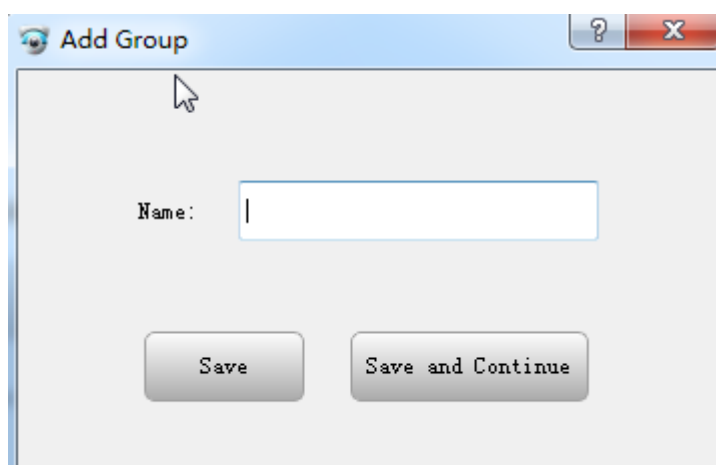
- If you want to add the discovered devices by Cloud ID, click this icon, choose login type: by IP/Domain or by Cloud ID.

### 3.3.2 Add Group

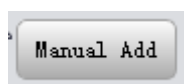
If you have several devices, you can divide them into separate groups.



click this button to add new group. The interface is as follows:



### 3.3.3 Add devices manually



click this button to add device manually. The interface is as follows:

Device name:		Edit a name for the device to identify different devices easily.
Group:		select a group for this device
Log-in Type:		Choose a way to add device, by IP/Domain or by Cloud ID
By IP/Domain	IP/Domain	Device's IP/Domain
	Port	Device's TCP port
By Cloud ID	Cloud ID(SN)	Device's Cloud ID(Serial Number)
User name, Password		Device's Username and password



### Add Device

Device Name:

Group:

Login Type:

IP/Domain:

Port:

UserName:

Password:

### Add Device

Device Name:

Group:

Login Type:

Cloud ID (Serial NO):

UserName:

Password:

- If you need to add more than one devices , please Click 'Save and Continue', then you can add more devices.
- If you only need to add one device, please click 'OK'.
- If you don't want to add, please click 'Cancel'.

### 3.3.4 Close window

**VMS**  
Videocamera Manage System

Home DeviceManager

click the cross to close the window

Has been discovered devices:

Name	CloudID	IP/Port	Vendor	Group
10.10.13.14	d87dd31365d54e59	10.10.13.14:34514	XM	Default Gr...
10.10.13.21	03ba70ce84f6ced8	10.10.13.21:34521	XM	Default Gr...
10.10.13.22	d8628f0893b2398c	10.10.13.22:34522	XM	Default Gr...
10.10.13.24	d55cc41700184baa	10.10.13.24:34524	XM	Default Gr...
10.10.13.34	2ae9dcb116896246	10.10.13.34:34534	XM	Default Gr...
10.10.13.42	021fc2b9cd992cc9	10.10.13.42:34542	XM	Default Gr...
10.10.13.43	7991eba21416dd81	10.10.13.43:34543	XM	Default Gr...
10.10.13.44	452929a058519fa2	10.10.13.44:34544	XM	Default Gr...
10.10.13.51	b6489c1d6469a267	10.10.13.51:34551	XM	Default Gr...
10.10.13.52	737afeec7f2814e2	10.10.13.52:34552	XM	Default Gr...
10.10.13.53	901c5bdc62213c89	10.10.13.53:34553	XM	Default Gr...
10.10.200.127	c0791b077a8f07d2	10.10.200.127:34567	XM	Default Gr...
10.10.200.148	4262089249e72092	10.10.200.148:34567	XM	Default Gr...
10.10.200.149	985b7310650b45	10.10.200.149:34567	XM	Default Gr...
10.10.200.227	fff030b7151a37c4	10.10.200.227:34567	XM	Default Gr...
10.10.200.247	beb193780740c69a	10.10.200.247:34567	XM	Default Gr...
10.10.32.127	1f104774f239348e	10.10.32.127:34567	XM	Default Gr...
10.10.32.187	4f85f5032eed1676	10.10.32.187:34567	XM	Default Gr...
10.10.32.194	0c4d52f992a3e428	10.10.32.194:25001	XM	Default Gr...
10.10.32.213	af850de1220ae29f	10.10.32.213:34567	XM	Default Gr...
10.10.32.242	1c0a3b6f642888f85	10.10.32.242:34567	XM	Default Gr...
10.10.32.245	e0ca510481b13758	10.10.32.245:34567	XM	Default Gr...
10.10.32.42	26e0667b13bdec64	10.10.32.42:34567	XM	Default Gr...
10.10.32.71	12184db7e85c4e25	10.10.32.71:34567	XM	Default Gr...
10.10.33.116	47e4984d00b84016	10.10.33.116:34567	XM	Default Gr...
10.10.33.140	60050439940bda7e	10.10.33.140:34567	XM	Default Gr...

Search Again

Has been added devices:



Name	CloudID	IP/Port	Group	Status
10.10.200.222	eda302bb7324625f	10.10.200.222:34567	support	Offline
10.10.200.153	2038a25dee685131	10.10.200.153:34567	support	Connected
10.10.200.224	c6dea88c51eeb799	10.10.200.224:34567	support	Connected
10.10.200.225	6d674401dc12ad62	10.10.200.225:34567	support	Connected
10.10.200.226	c0d3fb97e9b84571	10.10.200.226:34567	support	Connected
10.10.13.11	bd0f86243de7315	10.10.13.11:34511	exhibition room	Connected
10.10.200.247	beb193780740c69a	10.10.200.247:34567	support	Offline
10.10.13.14	d87dd31365d54e...	10.10.13.14:34514	exhibition room	Connected
10.10.13.12	094cc4ae99d11565	10.10.13.12:34512	exhibition room	Connected

☐ In order to login device, modify ip automatically

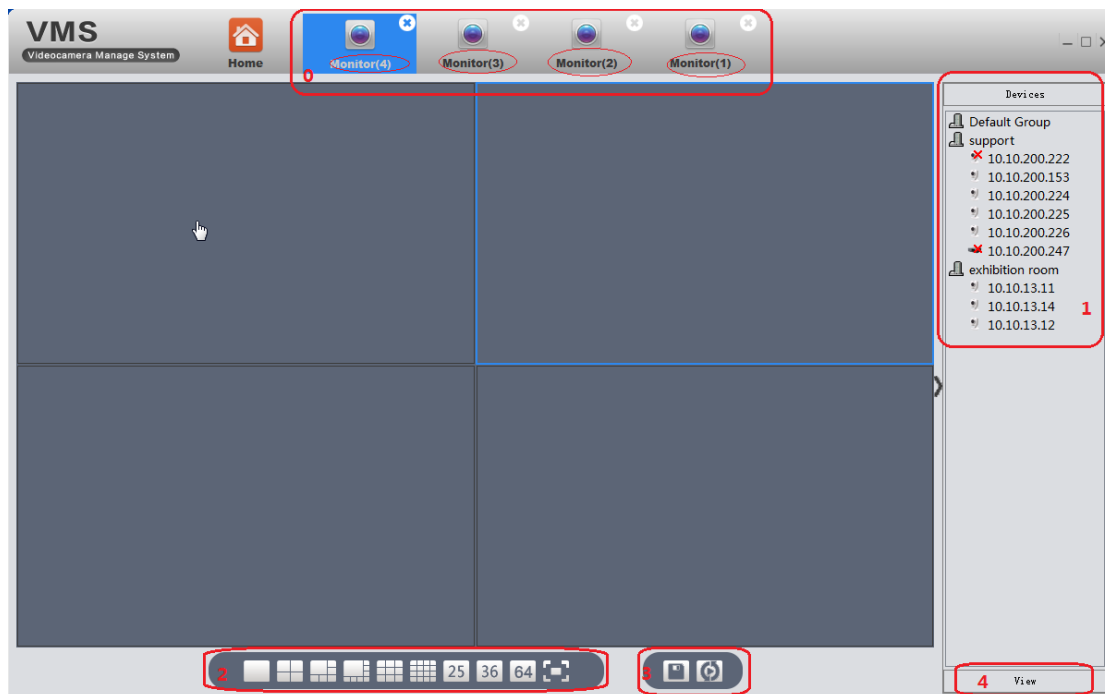
Click the cross to close the window(as shown in the above pic).

## 3.4 Monitoring

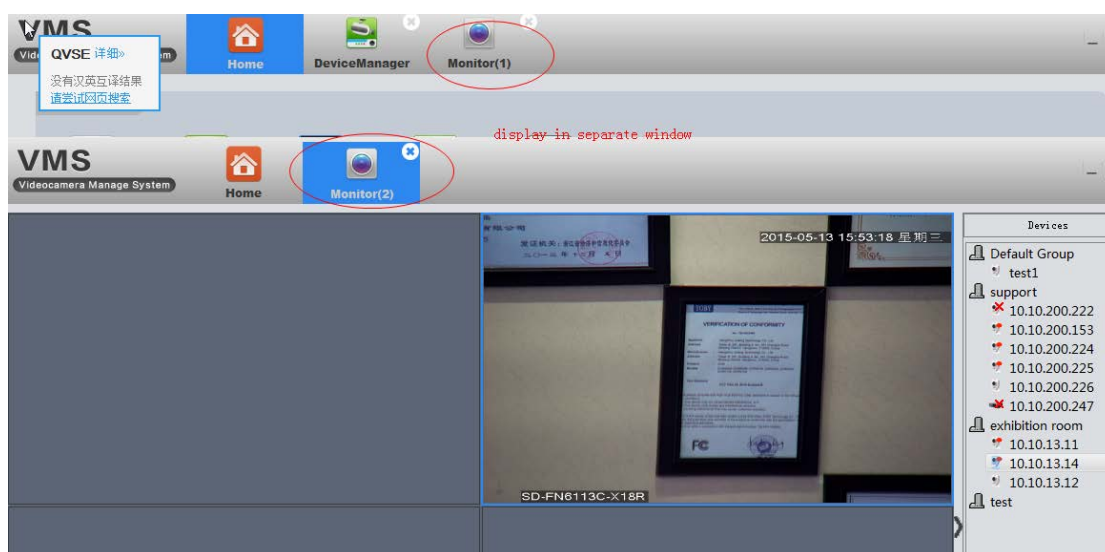
1	Devices list. You will find all the devices you added, arranged in groups. Display devices' name and device status, the red cross means the device is not online
---	--

2	Support 1/4/6/8/9/16/25/36/64 split. Support Maximize window
3	 save view  tour(see 3.11)
4	View(see 3.4.1)

✧ A description will be displayed when the mouse is over the icon




❖ VMS support up to 4 monitors at the same time. Click and drag, each can be dragged out into a separate window. This is very convenient for multiple screen monitoring. Each window can see 64 channels at most,  $64 \times 4 = 256$ . So, in theory, you can see 256 at most. As stated in the overview, the actual preview number is limited by the properties of the PC, the resolution of devices (bit rate), network bandwidth etc.

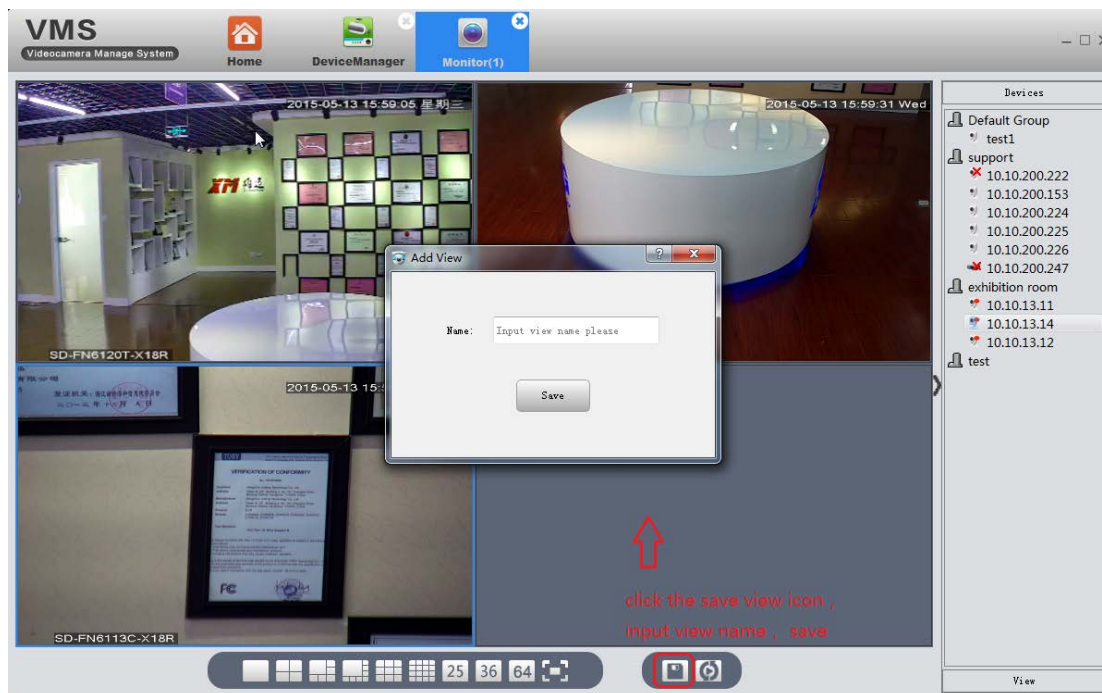


### 3.4.1 View

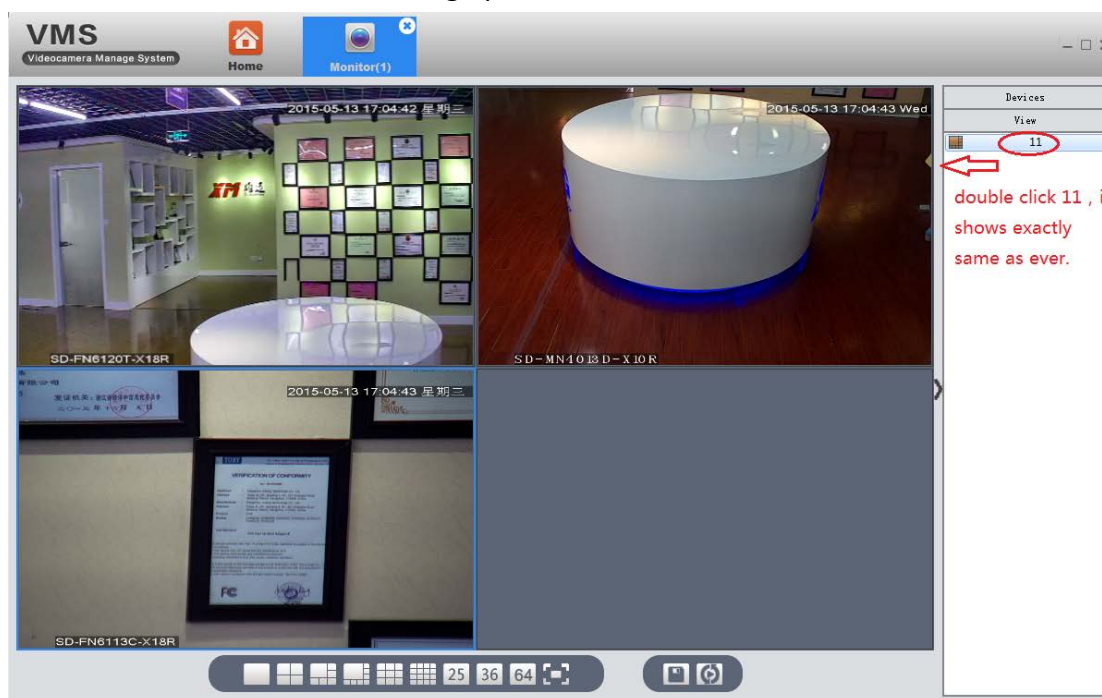
Double click the device name in the right list, or right click to choose main/extra stream to connect real-time video. If you want VMS to remember the view, please

click 'save view' icon , save the current view. For example:

First, connect the devices as the following image shows, then save that view as 11.

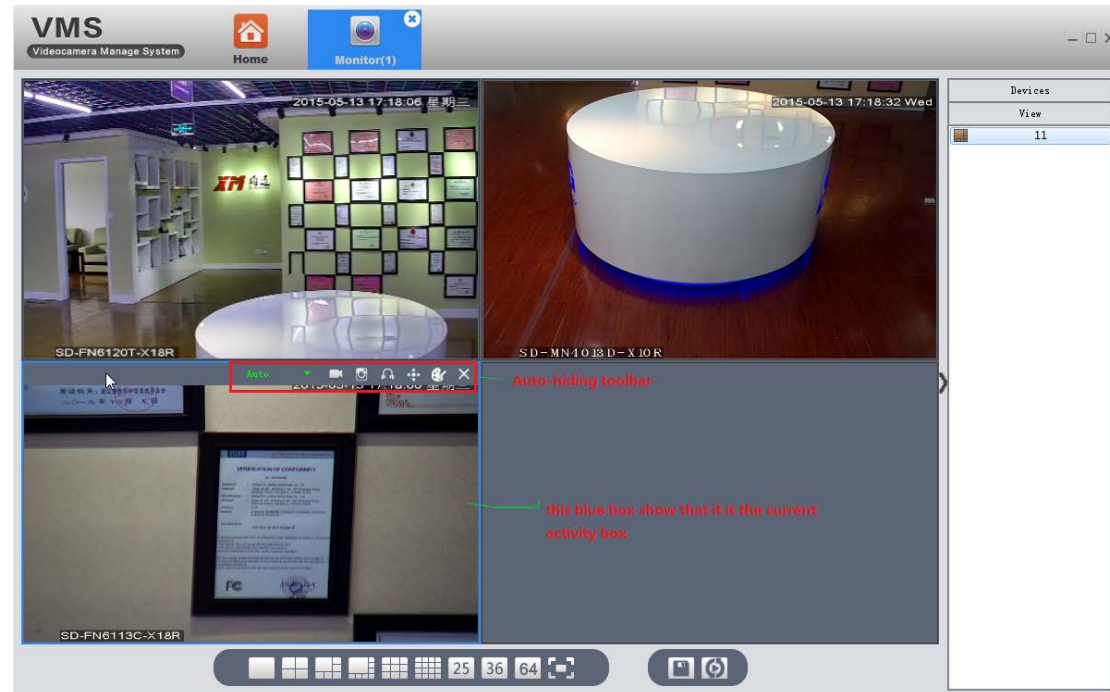


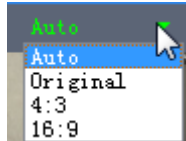




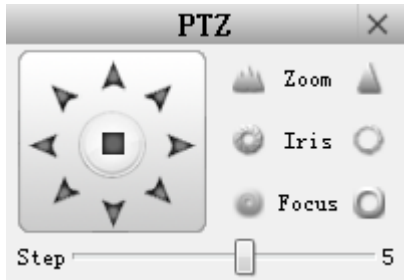


The next time you login in, you don't have to connect one by one again, just double click the saved view 11 and it bring up the saved view.



### 3.4.2 Other Features

Positioning the mouse cursor at the top of the active window will display the auto-hiding toolbar.

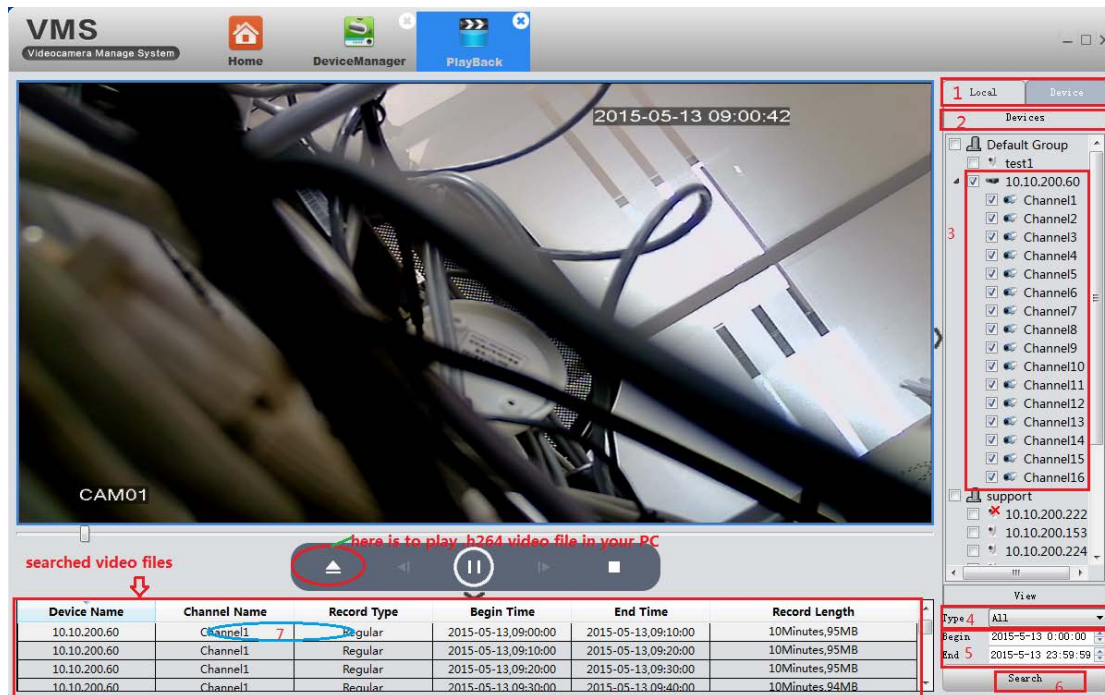


	Choose display scale, auto resize turned on by default.
	Manually record to local storage
	Save screenshots to local storage
	Click to enable audio
	
	<p>Adjust the color of video on VMS, Not of the device.</p> 



## 3.5 Playback

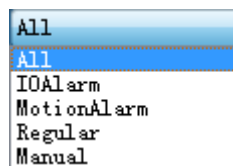
Click Playback icon in main interface.



Step 1: Choose local(PC) or devices according to where the video is stored.

Step 2: It shows the selection result in step 1.

Step 3: Choose query objects, from a group ,a device to a specific channel of a DVR.



Step 4: Choose video type

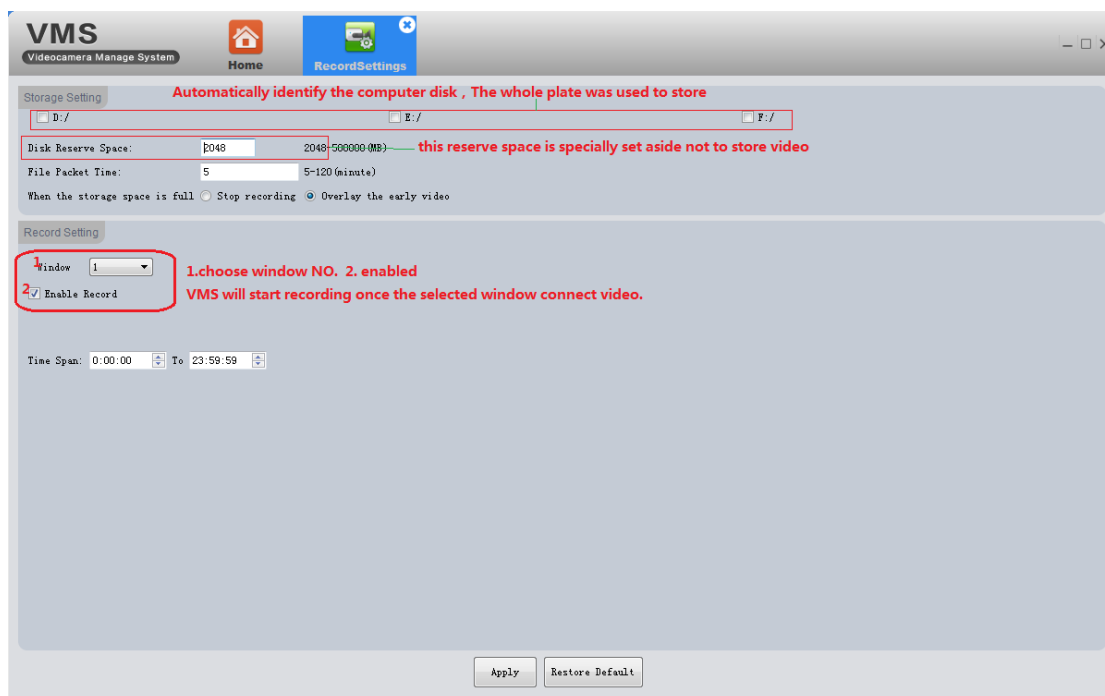
Step 5: Choose date and time

Step 6: Click Search

Step 7: All video files that conform with search criteria are displayed at bottom left.

Double click any file, start to play.

## 3.6 Record Settings



### 3.6.1 Storage settings

- Automatically identify the PC disk. The whole disk is used for storing.
- The disk reverse space is specially set aside not to store video

### 3.6.3 Record settings

1. Select window
2. Tick enable
3. Click Apply to save

VMS will start recording once the selected window connect video.

- Restore default---reset all record settings of VMS.

## 3.7 Log

On this page, you can search the operation Log of the client and device.



Gray is in selected state

Client: 1 Device

BeginTime: 2 2015-5-9 0:00:00 EndTime: 2015-5-14 23:59:59

Type: 3 Operation Log All Search 4

No.	Time	User Name	Type	Device	Channel	Remark
10	2015-05-12 19:31:07	admin	Operation	10.10.13.11	1	Stop Preview
11	2015-05-12 19:31:09	admin	Operation	10.10.13.11	1	Start Preview,Stream Type:Main Stream
12	2015-05-12 19:37:58	admin	Operation		1	Stop Preview
13	2015-05-12 20:35:56	admin	Operation			Logout
14	2015-05-13 09:10:11	admin	Operation	10.10.200.222	1	Start Preview,Stream Type:Main Stream
15	2015-05-13 09:13:40	admin	Operation	10.10.200.222	1	Stop Preview
16	2015-05-13 09:13:51	admin	Operation	10.10.200.222	1	Stop Preview
17	2015-05-13 09:13:51	admin	Operation	10.10.200.222	1	Start Preview,Stream Type:Main Stream
18	2015-05-13 09:13:51	admin	Operation	10.10.200.222	1	Stop Preview
19	2015-05-13 09:13:51	admin	Operation	10.10.200.222	1	Stop Preview
20	2015-05-13 09:13:51	admin	Operation	10.10.200.222	1	Start Preview,Stream Type:Sub Stream
21	2015-05-13 09:15:28	admin	Operation	10.10.200.226	1	Start Preview,Stream Type:Main Stream
22	2015-05-13 09:16:16	admin	Operation	10.10.13.12	1	Start Preview,Stream Type:Sub Stream
23	2015-05-13 09:16:19	admin	Operation	10.10.200.153	1	Start Preview,Stream Type:Sub Stream
24	2015-05-13 09:16:23	admin	Operation	10.10.200.224	1	Start Preview,Stream Type:Sub Stream
25	2015-05-13 09:16:26	admin	Operation	10.10.200.225	1	Start Preview,Stream Type:Sub Stream
26	2015-05-13 09:16:26	admin	Operation	10.10.12.11	1	Start Preview,Stream Type:Sub Stream

Previous Page Next Page

### 3.8 Alarm info

Untreated/All 2/2 Clear List

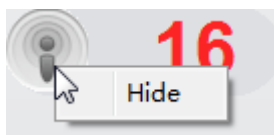
No.	Processing Status	Alarm Type	Time	Device	Channel
1	Unprocess	Motion Detect Happen	2015-05-14 09:52:17	10.10.200.60	1
2	Unprocess	Motion Detect Stop	2015-05-14 09:52:17	10.10.200.60	1

Double-click to change the processing status

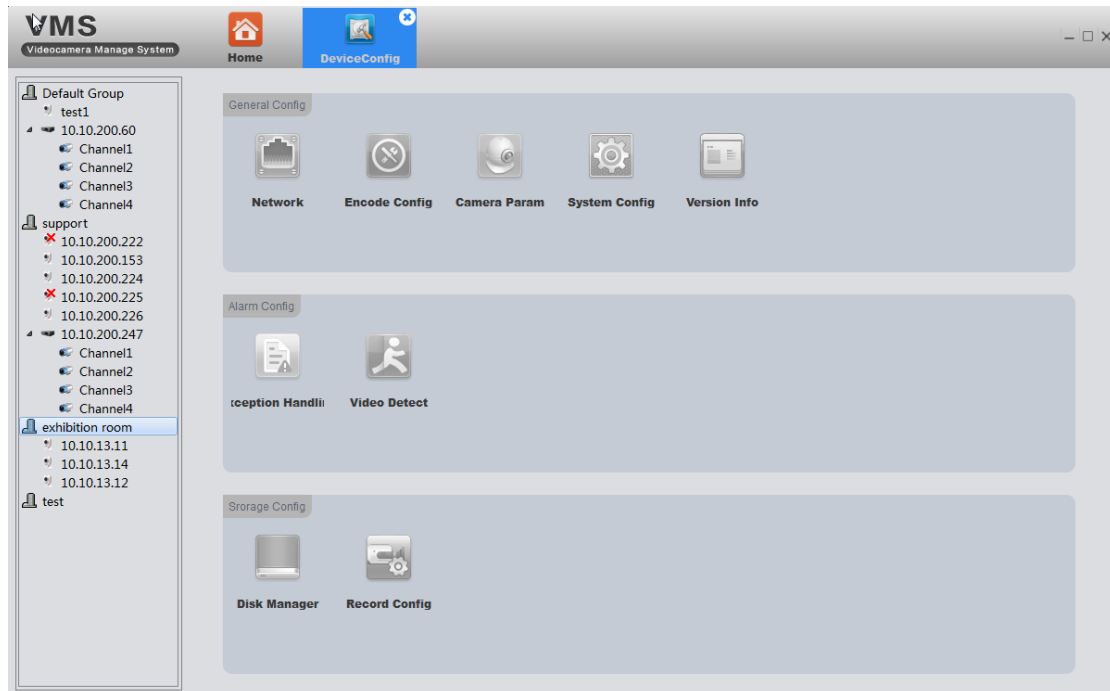
It shows all alarm info detected by VMS .

Red marks mean unprocessed. Double-click to change the processing status.

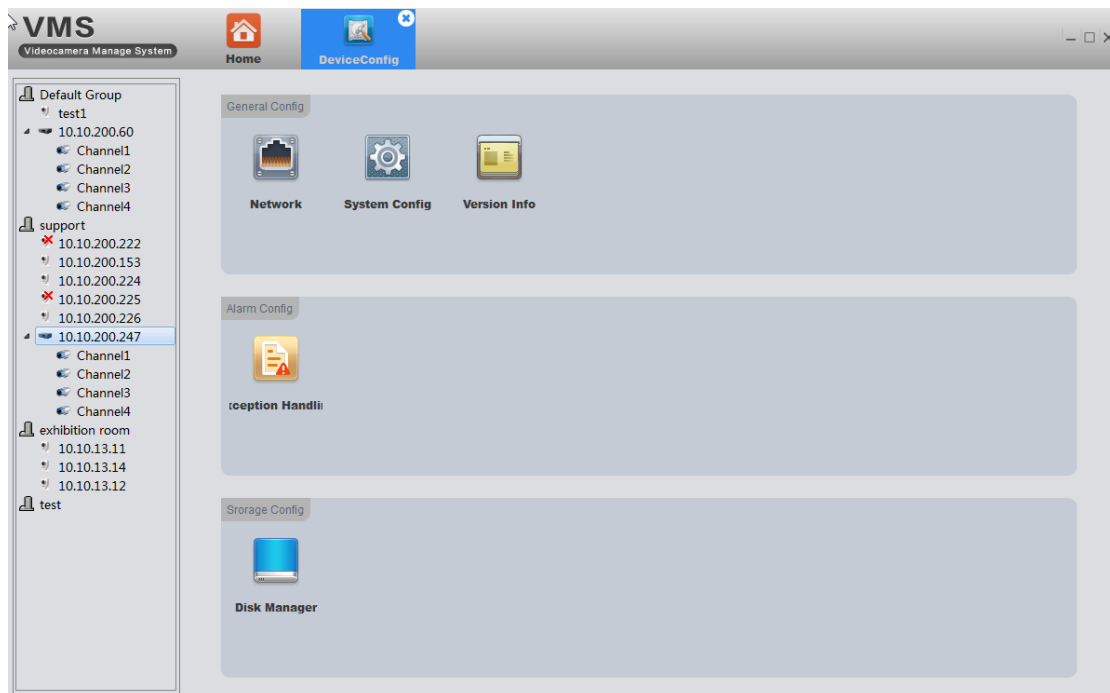
- ❖ When VMS is running, you will find an alarm message floating window at the top right corner. You can click to read the alarm message or right click to hide it.
- ❖ If you want VMS to show alarm prompts, you must enable the alarm features both on device (see 3.9.7) and VMS (see 3.10).



### 3.9 Device Config



- All icons will be gray before you choose a device. It will show the corresponding function/option according to the device type you choose.
- Full function/option for IPC (as shown in above pic).
- For NVR, there is no Encode and Camera Parameters as the following pic shows.

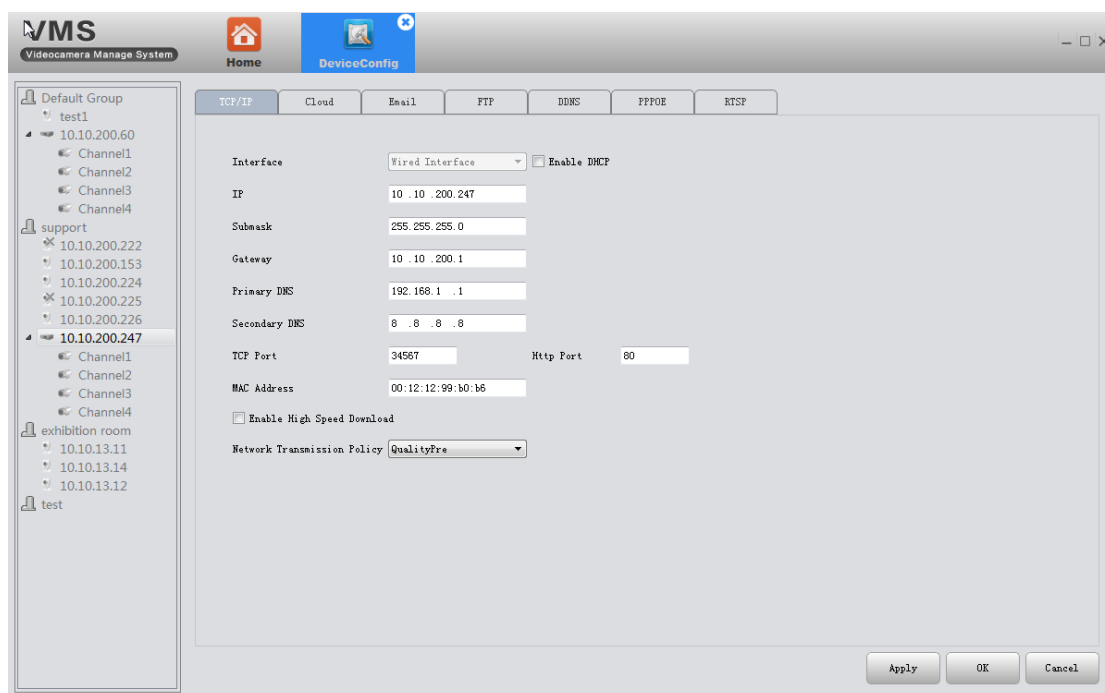


Click on the corresponding function to set and operate .



### 3.9.1 Network

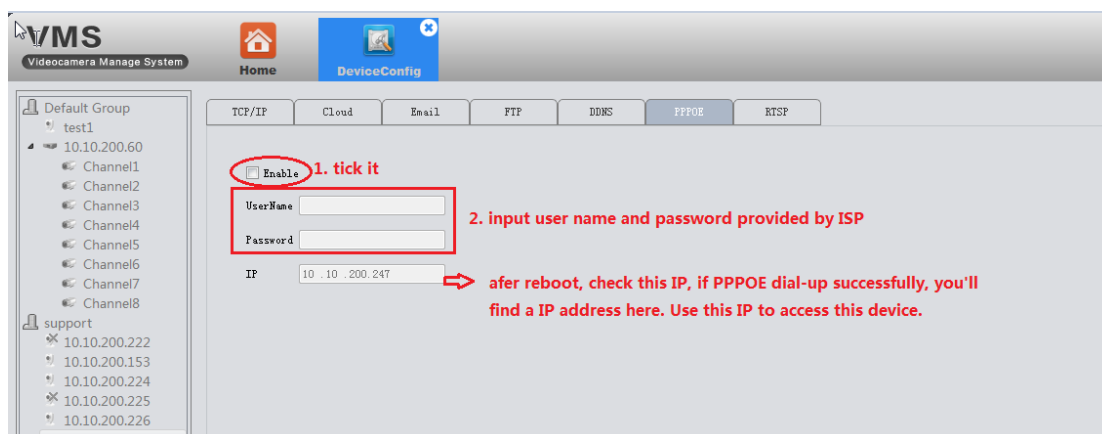
#### 3.9.1.1 Set device's IP



#### 3.9.1.2 PPPOE

- 1) Why: Device can build a connection with internet based on PPPOE.
- 2) How:

- ① the cable connected to device's Ethernet port must support PPPOE;
- ② plug-in cable, then input user name and password provided by ISP.



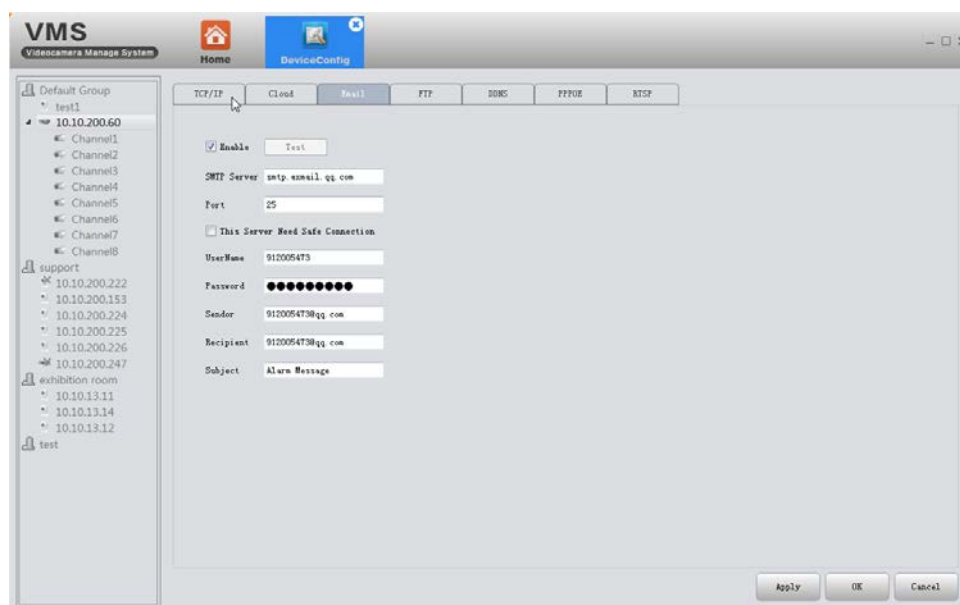
- ③ Reboot the device.

#### 3.9.1.3 Email

- 1) Why: with necessary parameter settings, the device will send alarm information and snapshot picture to appointed mailbox.

2) How:

- ① Before you use email, make sure your device is properly connected to the internet (the device need to connect to the mail server).
- ② Email configuration, as the following pic shows:



- ③ Click test, if it show success, please go to mailbox to check whether you get the test mail.

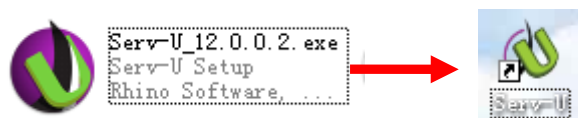
### 3.9.1.4 FTP

1) Why: FTP is available only when alarm happens, it can upload related record files and snapshot pictures to FTP server.

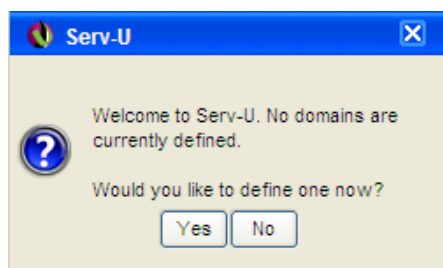
2) How:

➤ You need to build a FTP server first if you don't have a ready-made FTP server . Here is a way to build a FTP server by Serv-U software.

a. Install the Serv-U software

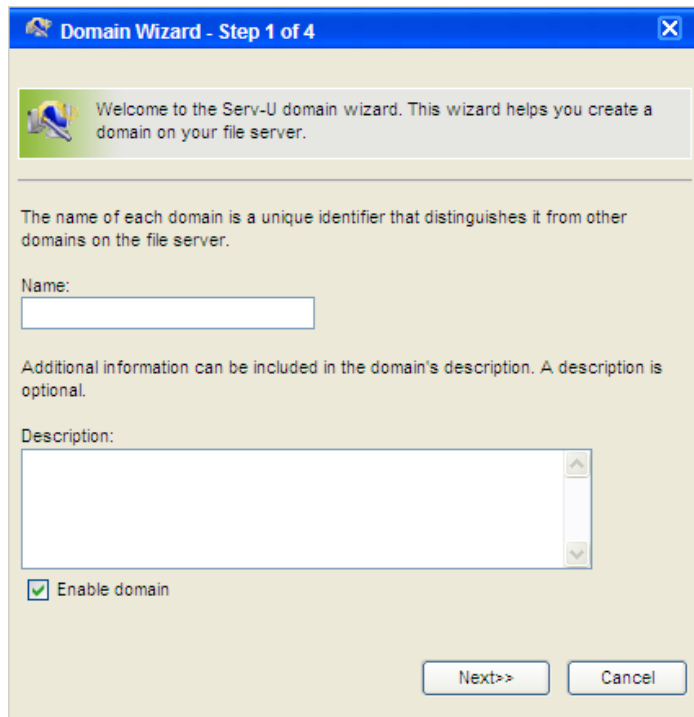


b. After installing the software, it will appears the step wizard which help you to define the domains and users, see as follow pic:



pic 1

Click "Yes", enter the next setting interface, see as pic 2



**Domain Wizard - Step 1 of 4**

Welcome to the Serv-U domain wizard. This wizard helps you create a domain on your file server.

The name of each domain is a unique identifier that distinguishes it from other domains on the file server.

Name:

Additional information can be included in the domain's description. A description is optional.

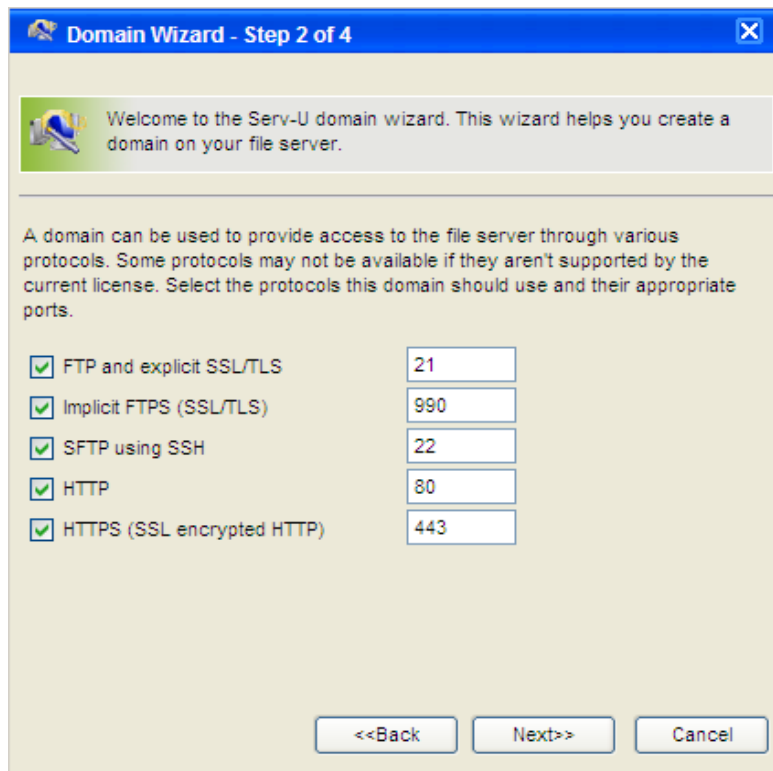
Description:

☒ Enable domain

Next>> Cancel

Pic 2

Input name and description, click "Next".



**Domain Wizard - Step 2 of 4**

Welcome to the Serv-U domain wizard. This wizard helps you create a domain on your file server.

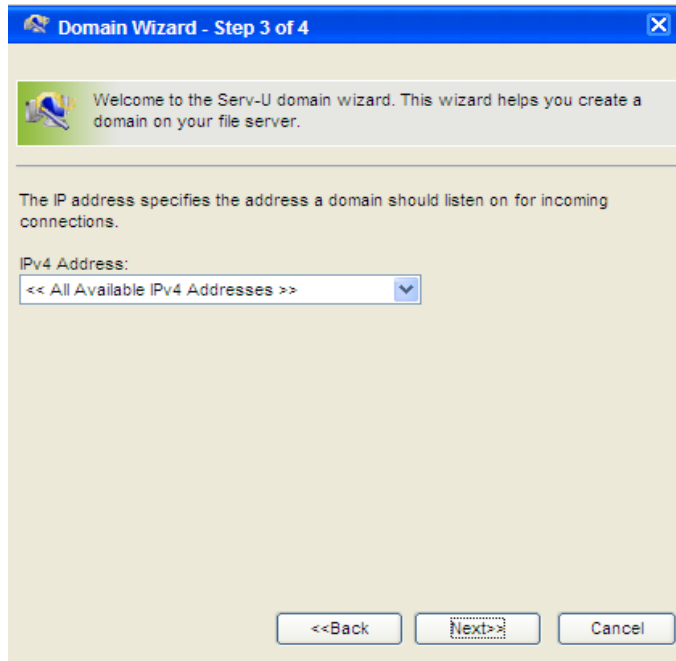
A domain can be used to provide access to the file server through various protocols. Some protocols may not be available if they aren't supported by the current license. Select the protocols this domain should use and their appropriate ports.

<input checked="" type="checkbox"/> FTP and explicit SSL/TLS	<input type="text" value="21"/>
<input checked="" type="checkbox"/> Implicit FTPS (SSL/TLS)	<input type="text" value="990"/>
<input checked="" type="checkbox"/> SFTP using SSH	<input type="text" value="22"/>
<input checked="" type="checkbox"/> HTTP	<input type="text" value="80"/>
<input checked="" type="checkbox"/> HTTPS (SSL encrypted HTTP)	<input type="text" value="443"/>

<<Back Next>> Cancel

Pic 3

Click "Next", and see as pic 4. Choose your PC's IP as the built domain's IP from the drop-down box.



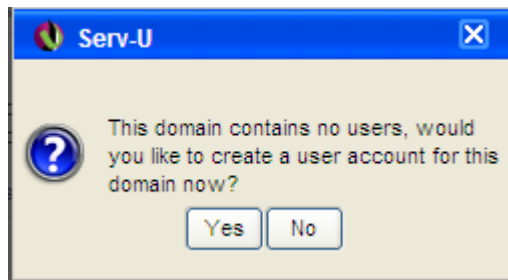
Pic 4

Click "Next".



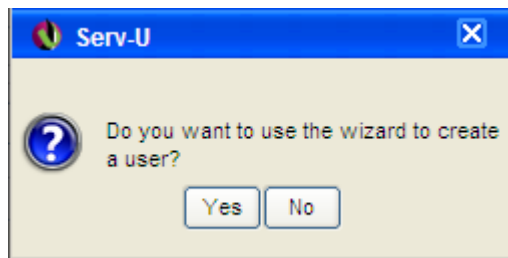
Pic 5

Click "Finish", the domain already had been defined, next step wizard will help you define users



Pic 6

Click "Yes", it will appear a tip, see as pic 7



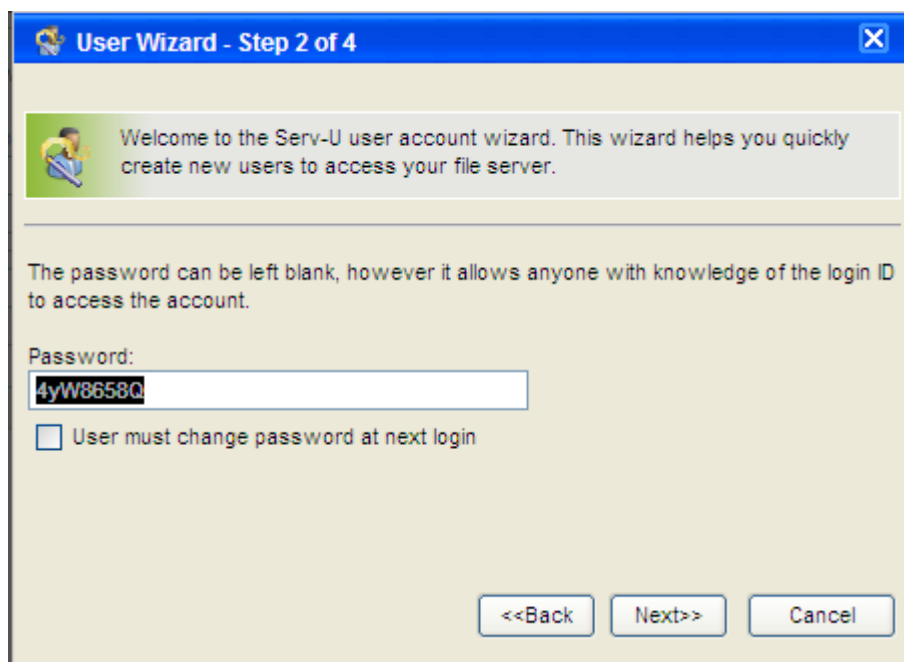
Pic 7

Click "Yes", enter the user wizard step 1

A screenshot of a "User Wizard - Step 1 of 4" dialog box. It has a blue title bar with a wizard icon. Below the title bar is a green banner with a wizard icon and the text: "Welcome to the Serv-U user account wizard. This wizard helps you quickly create new users to access your file server." Below this, a text box explains: "The login ID is provided by the client to identify their account when attempting to login to the file server." There are three input fields: "Login ID:" with the text "test" entered, "Full Name:" (optional), and "Email Address:" (optional). At the bottom right, there are two buttons: "Next>>" and "Cancel".

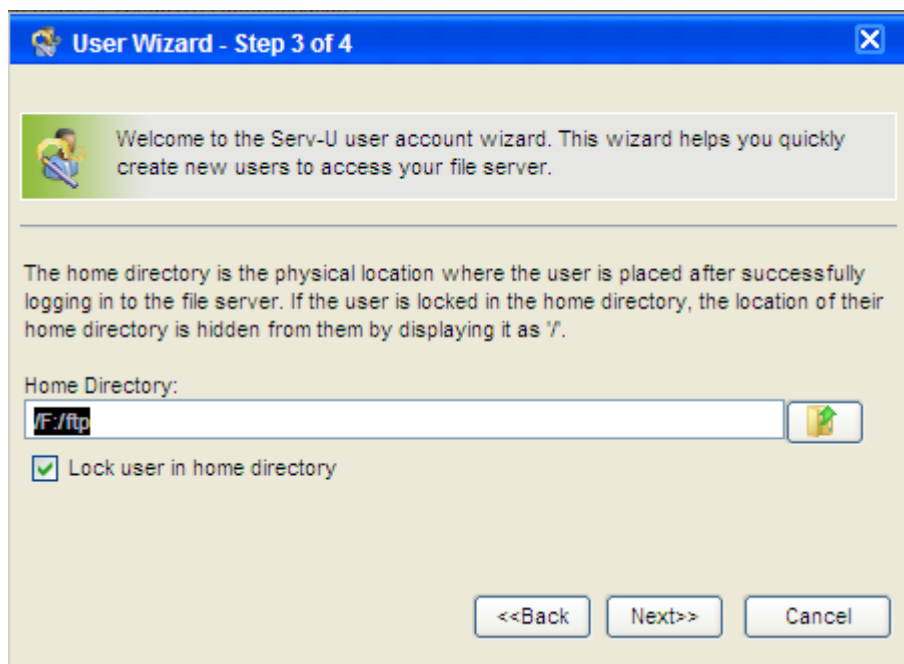
Pic 8

Input Log-in ID, Full name, Email Address for messages, and click "Next".



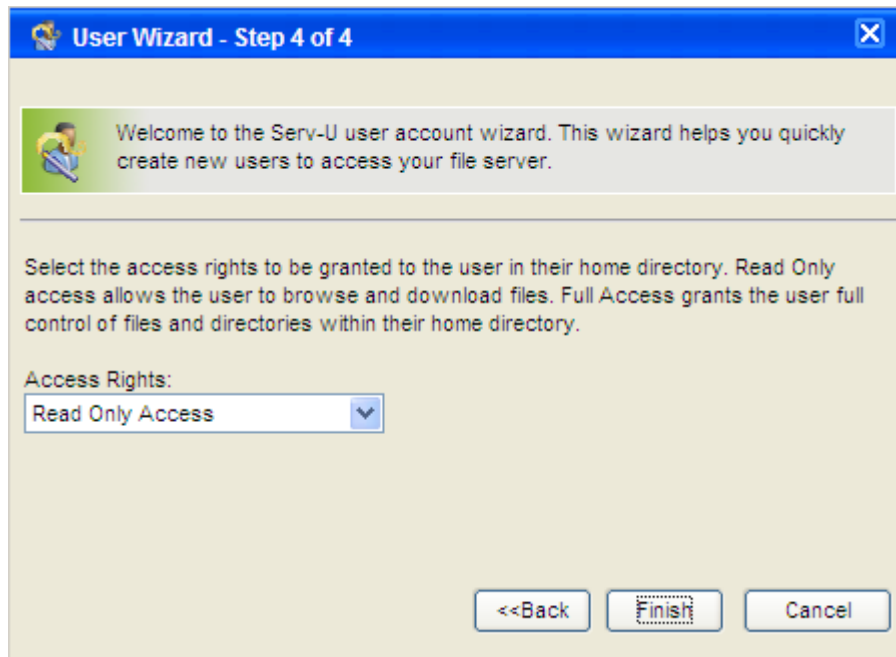
Pic 9

Click "Next".



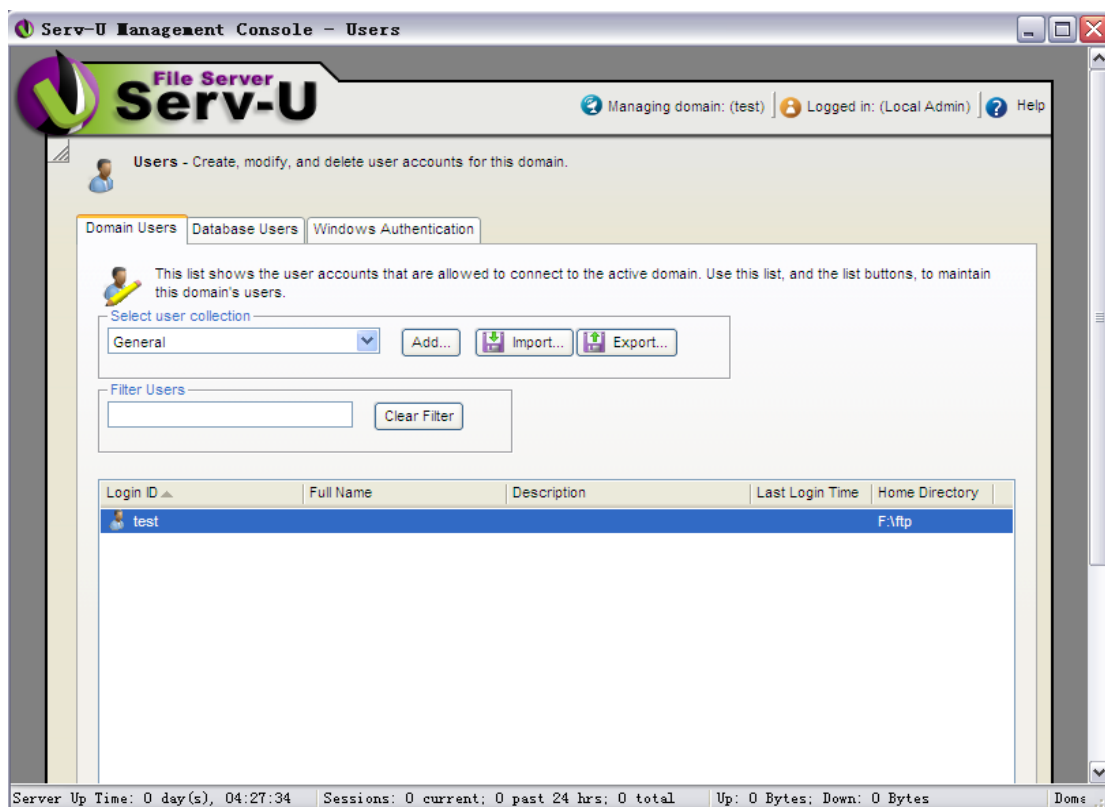
Pic 10

Set the home directory, and click "Next".



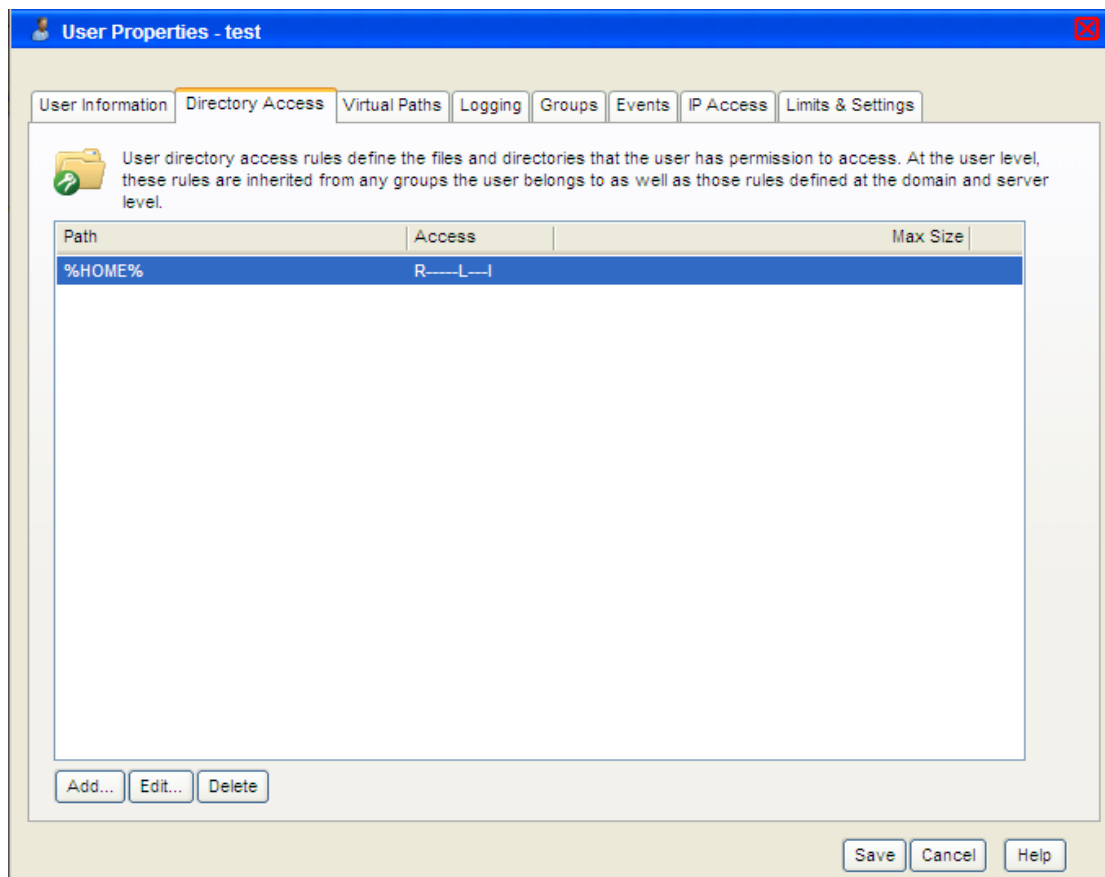
Pic 11

Click "Finish". If you have defined user, you will see the following interface.



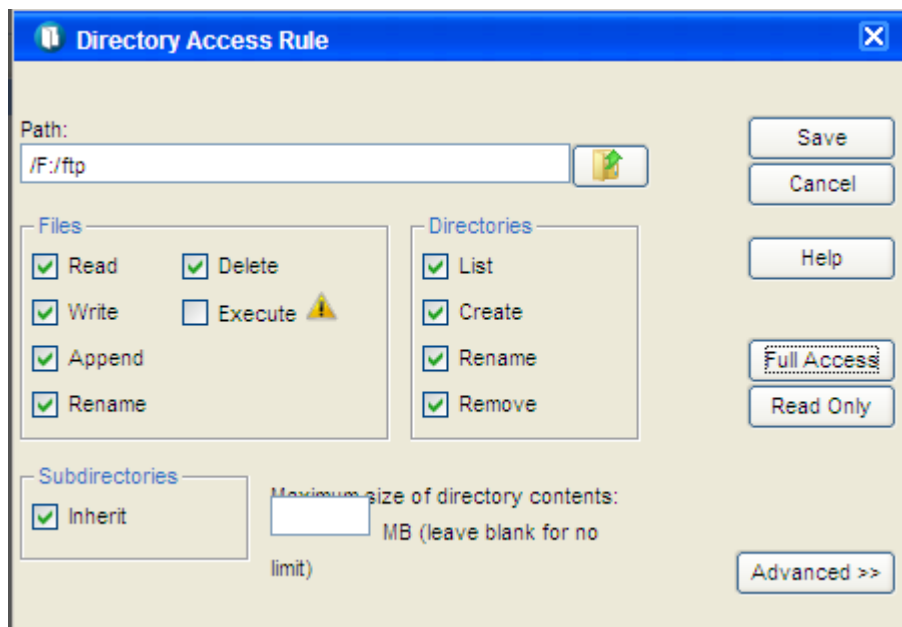
Pic 12

Click log-in ID test, setting directory, see as follow pic 13



Pic 13

Find "directory access", click the path and set it. See picture 14.

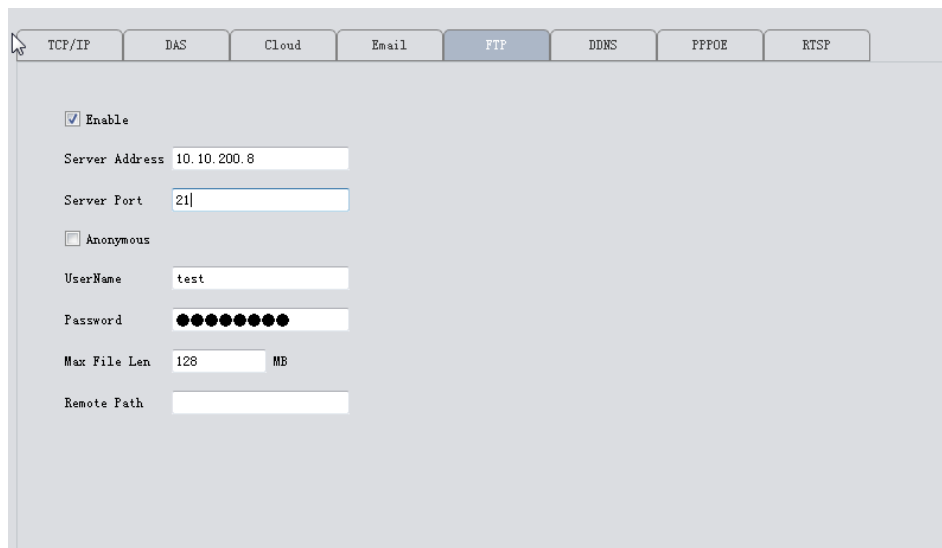


Pic 14

Click "Save". After finishing all of the above steps, we have configured the FTP server.

➤ FTP settings of device





TCP/IP DAS Cloud Email **FTP** DDNS PPOE RTSP

☒ Enable

Server Address 10.10.200.8

Server Port 21

☐ Anonymous

UserName test

Password ●●●●●●●●

Max File Len 128 MB

Remote Path

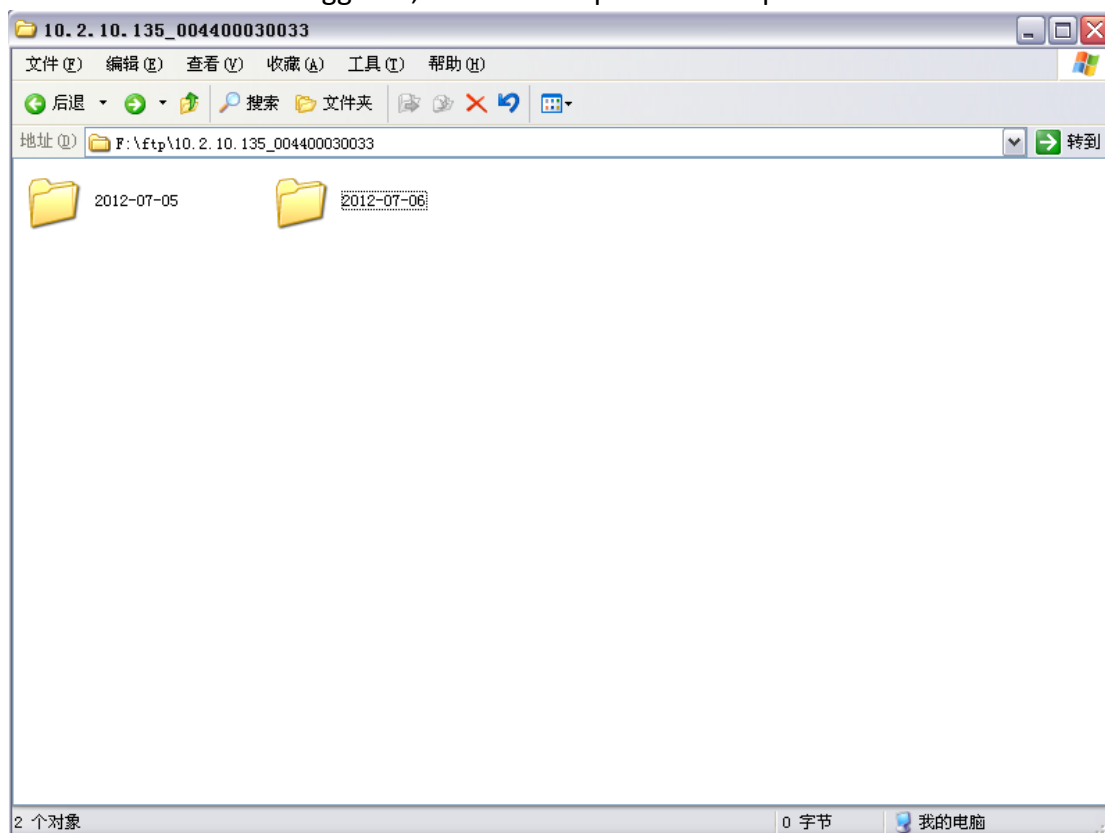
Pic 15

The server Address is the IP address of the PC where you host the FTP server.

The user name and password are the same as configured for the FTP service.

- ❖ Note: Ensure the network connection between your device and FTP server is established.

➤ when an alarm is triggered, the file will uploaded to ftp.



### 3.9.1.5 RTSP

- 1) Why: This service is needed when you use Non IE kernel browser (such as Safari, Google Chrome, Foxfire, Opera etc. ) to access device.
- 2) How: this service is default enabled, as follows,

### 3.9.1.6 Cloud

The cloud service is also default enabled. As long as your device's network is connecting the Internet ,you can easily use the Cloud ID to remotely access your device without complicated settings like port forwarding.

### 3.9.1.7 DDNS

DDNS: Dynamic Domain Name Server.

a. First you need an available domain name. Our device default support five DDNS type :CN99/DynDns/Oray/NO-IP/MYQ-SEE.

b. On this page, binding the domain name with your device. Forwarding HTTP and TCP ports of this device in your router. Then you can use the domain name and HTTP port to web access device, or use domain name and TCP port to access device via PC/mobile client.

### 3.9.1.8 DAS

DAS: it will auto put your device registered to optional P2P server.

TCP/IP DAS Cloud Email FTP DDNS PPPOE RTSP

☒ Enable

SerialNO 123456 this serial NO. is used for myeye server to identify this device. Edited by yourself.

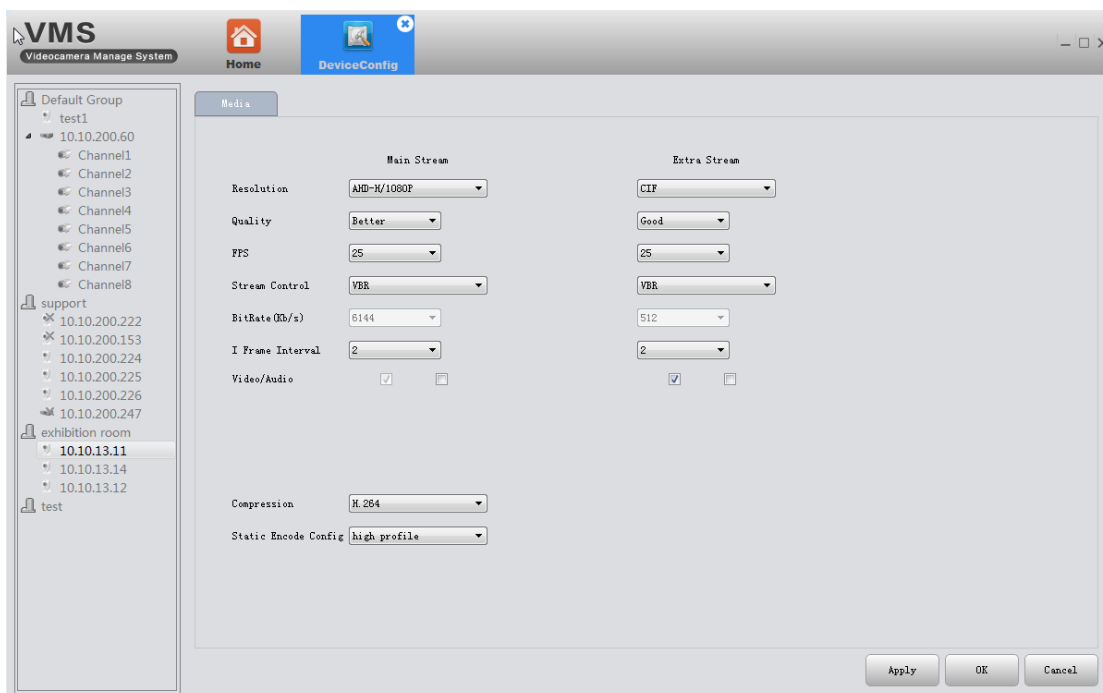
Server Address 218.72.73.38 myeye server's address. must connected with this device

Server Port 9400 Listen port of myeye ARS server. the default is 9400

UserName admin device's username and passport

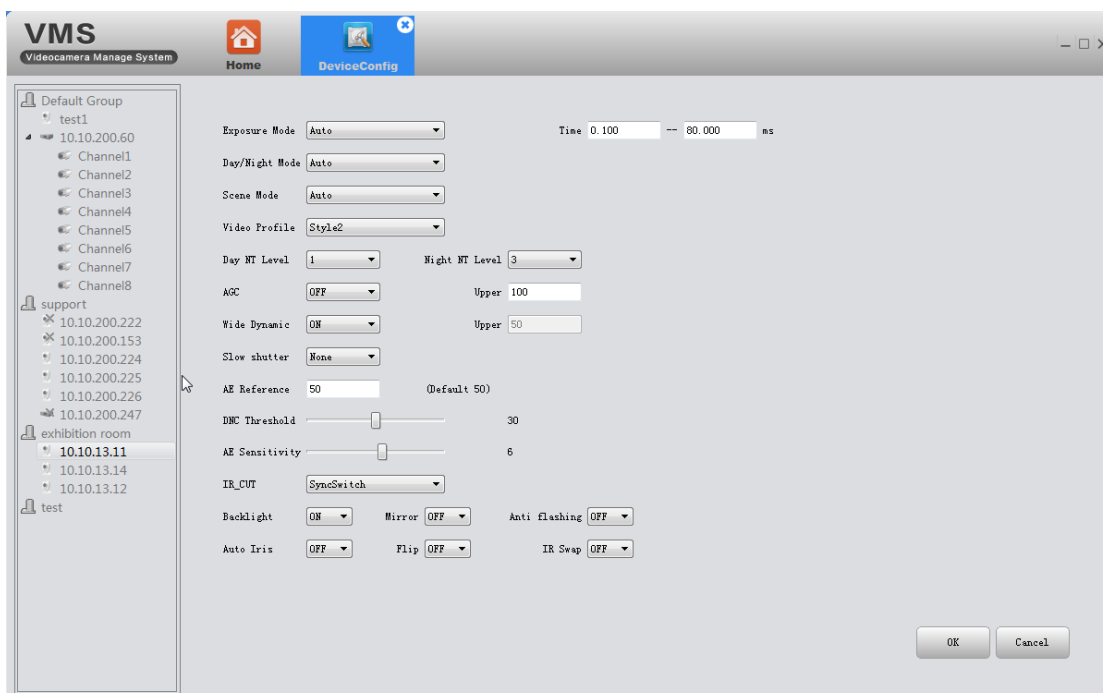
Password ●●●●

### 3.9.2 Encode



Set video/audio encode parameters of DVR/IPC. All of our devices support dual stream: main stream and extra stream. You can choose adaptive resolution, FPS, quality and so on according to your needs.

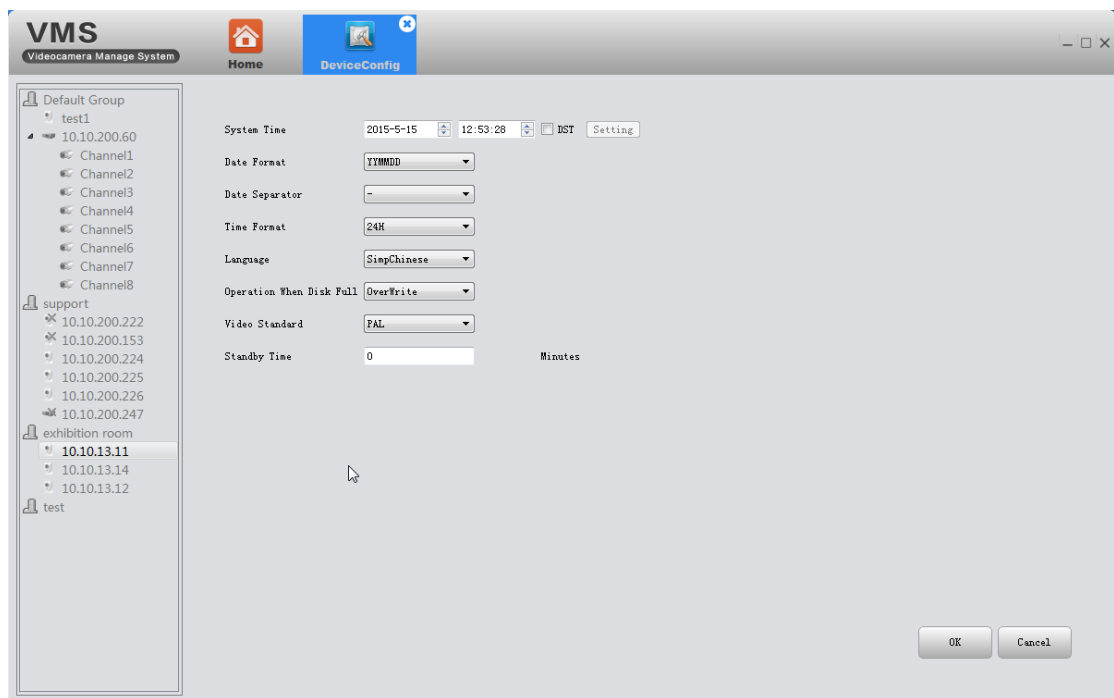
### 3.9.3 Camera Parameters



Use this section to modify IPC parameters, including Exposure mode, Day/Night mode, Day/Night level, wide dynamic, AE reference, AGC, backlight

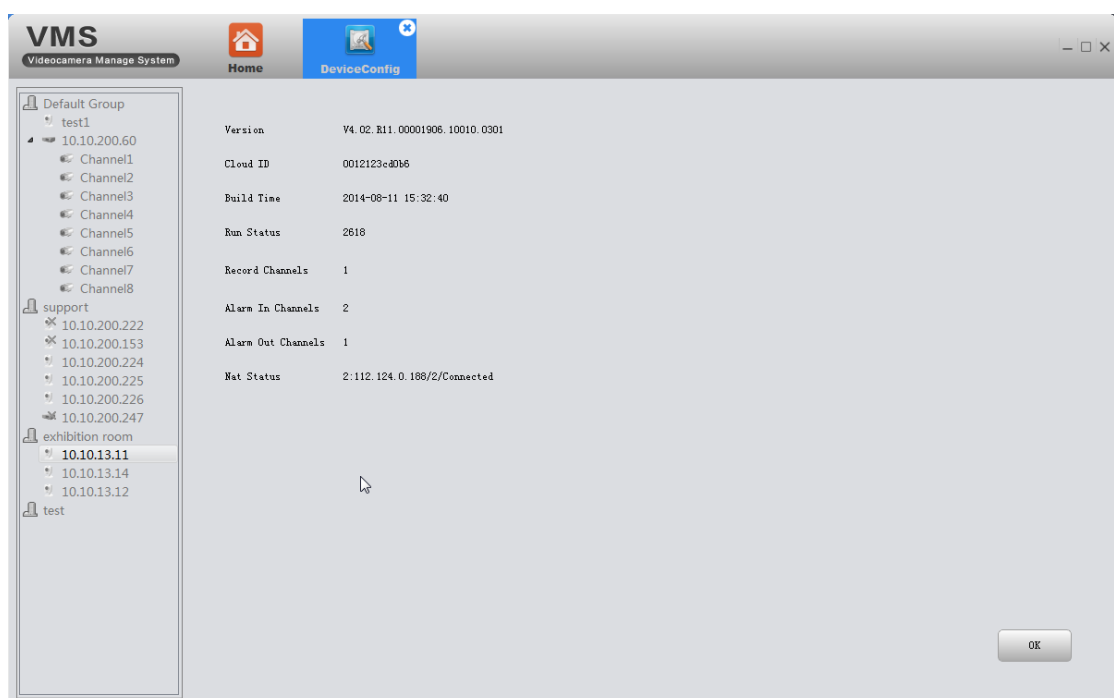
compensation, slow shutter, IR\_CUT swap, Flip, mirror, anti-flicker , Auto iris, etc.

### 3.9.4 System



Use this section to modify the device's time, language, operation when disk is full.

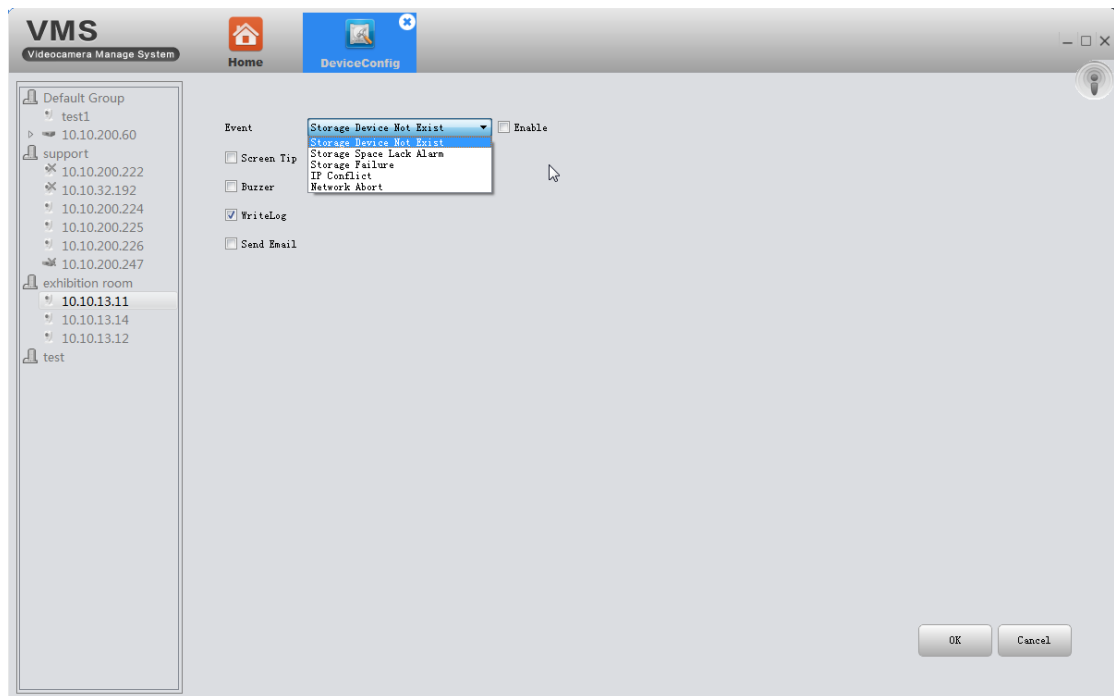
### 3.9.5 Version Info



Display the basic information such as hardware information, firmware version,

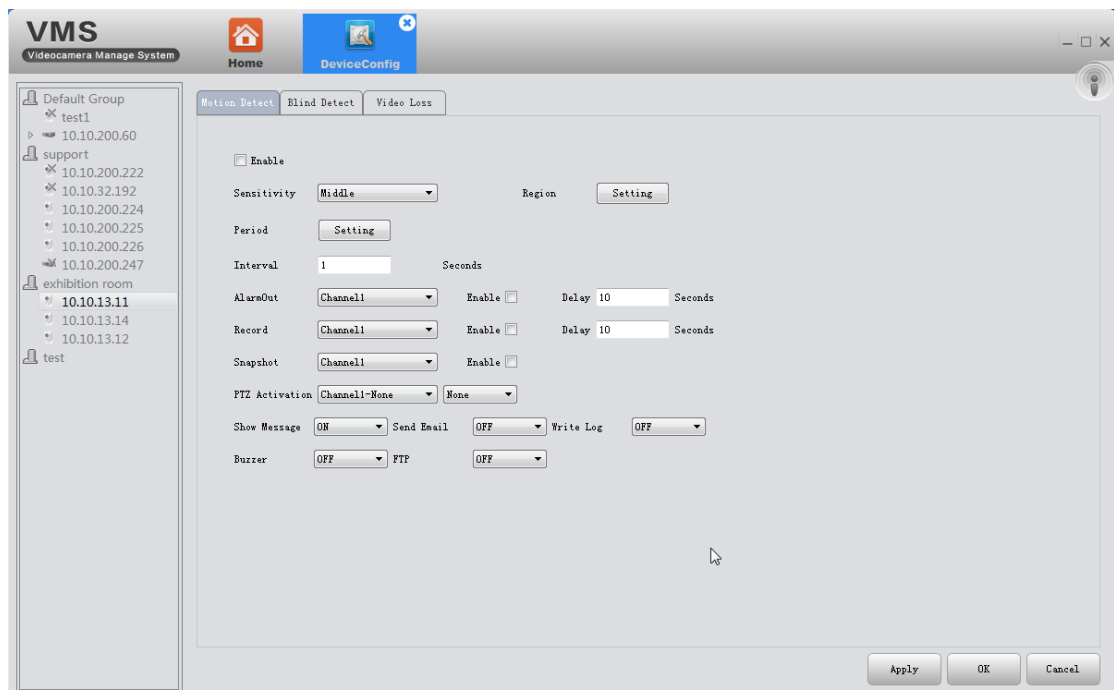
build date, serial No. and so on.

### 3.9.6 Exception Handling



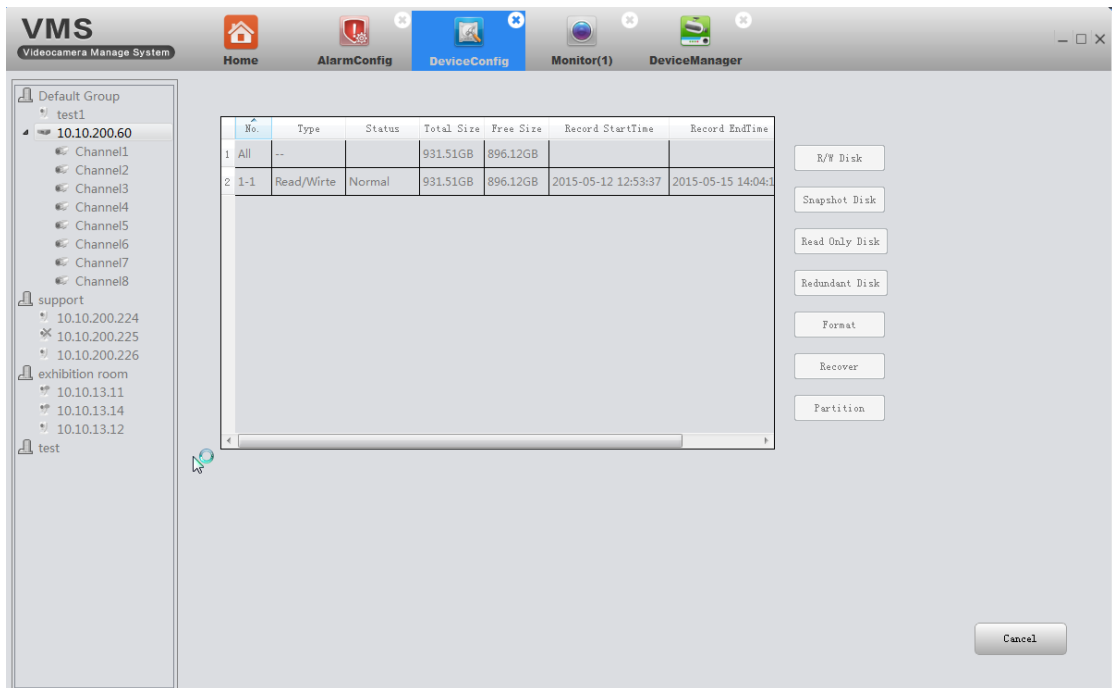
Choose event type from the drop-down box, and choose the alarm type you want. The alarm info will be recorded in device's Log if you tick Write log. And if you want it to send alarm message to your mailbox, make sure the email configuration is successfully set (see 3.9.1.3).

### 3.9.7 Video Detect

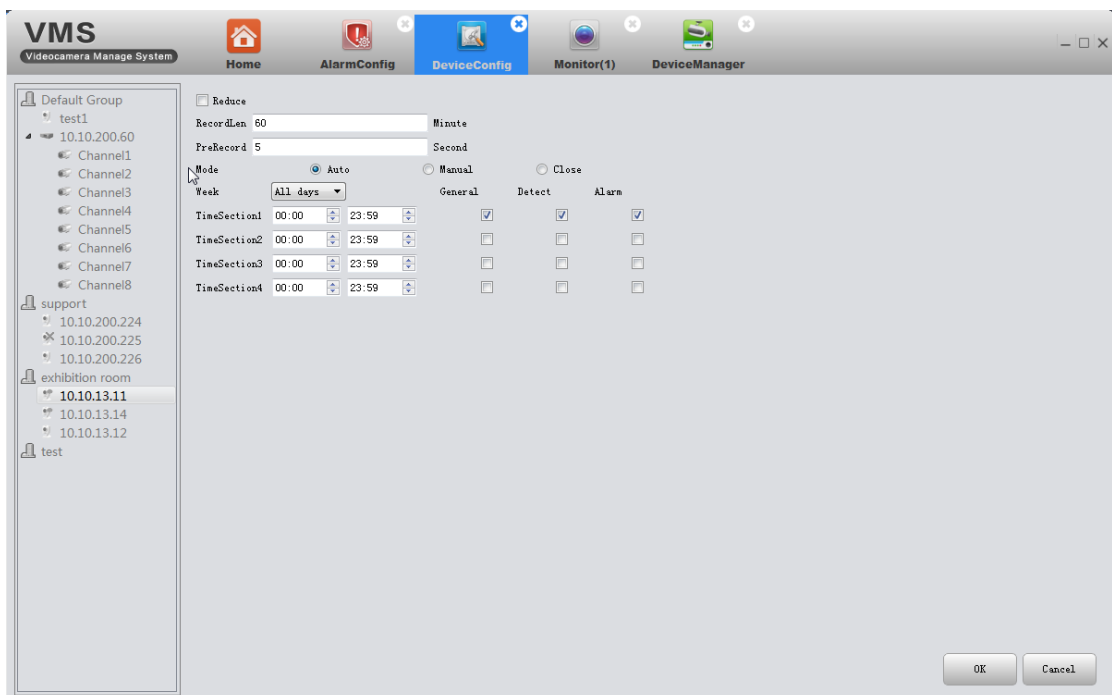


Including motion detection, blind detect, video loss.

### 3.9.8 Disk Manager

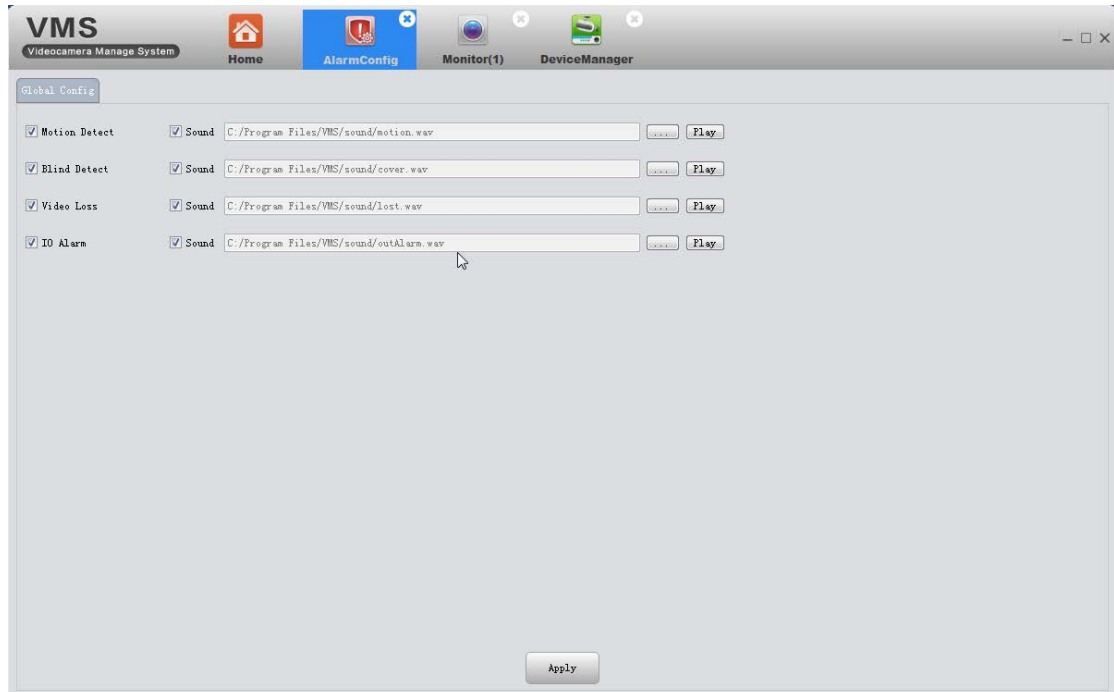


### 3.9.9 Record Config



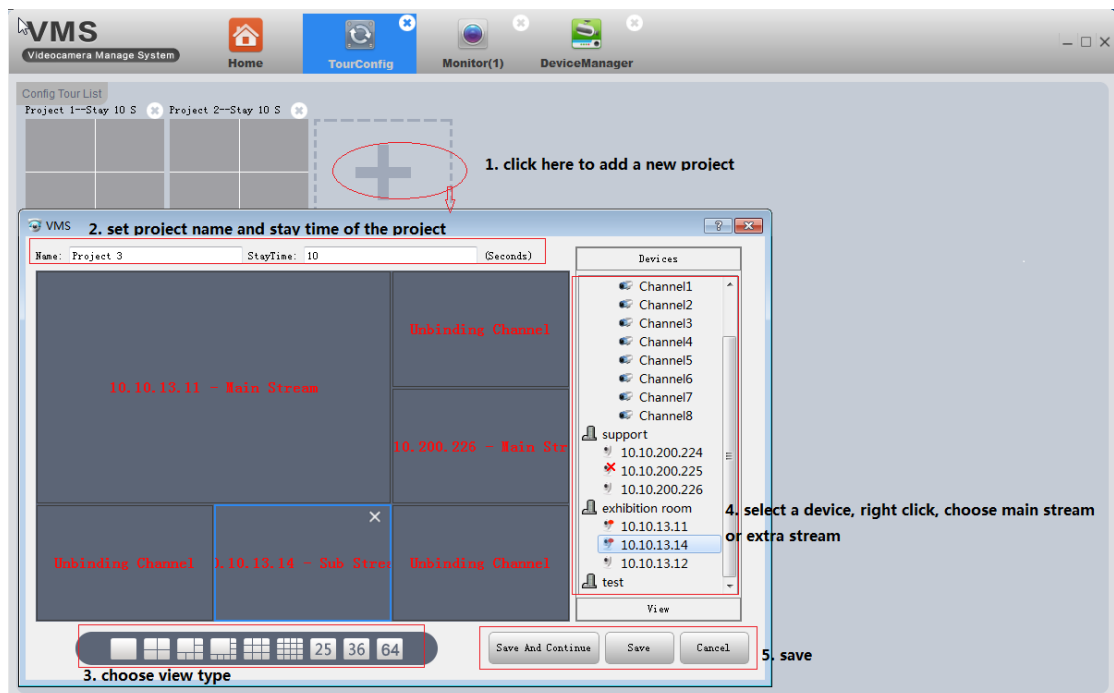
### 3.10 Alarm Config

Alarm Configuration of VMS. You can set different prompt sound when alarm triggered.



### 3.11 Tour

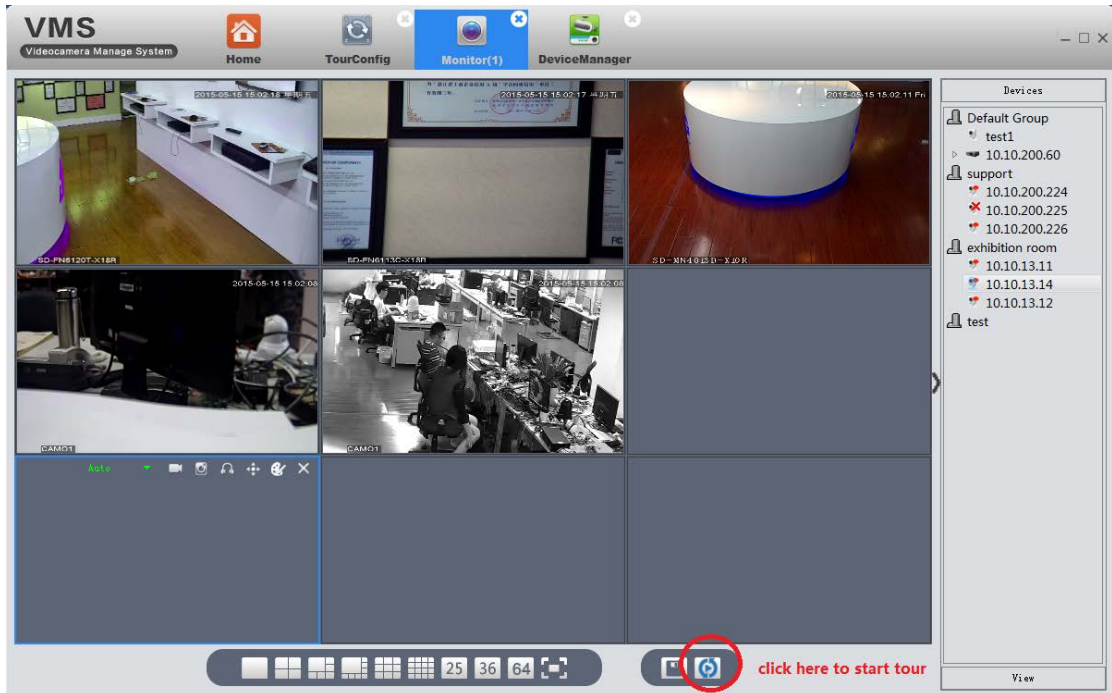
#### 1) Add projects



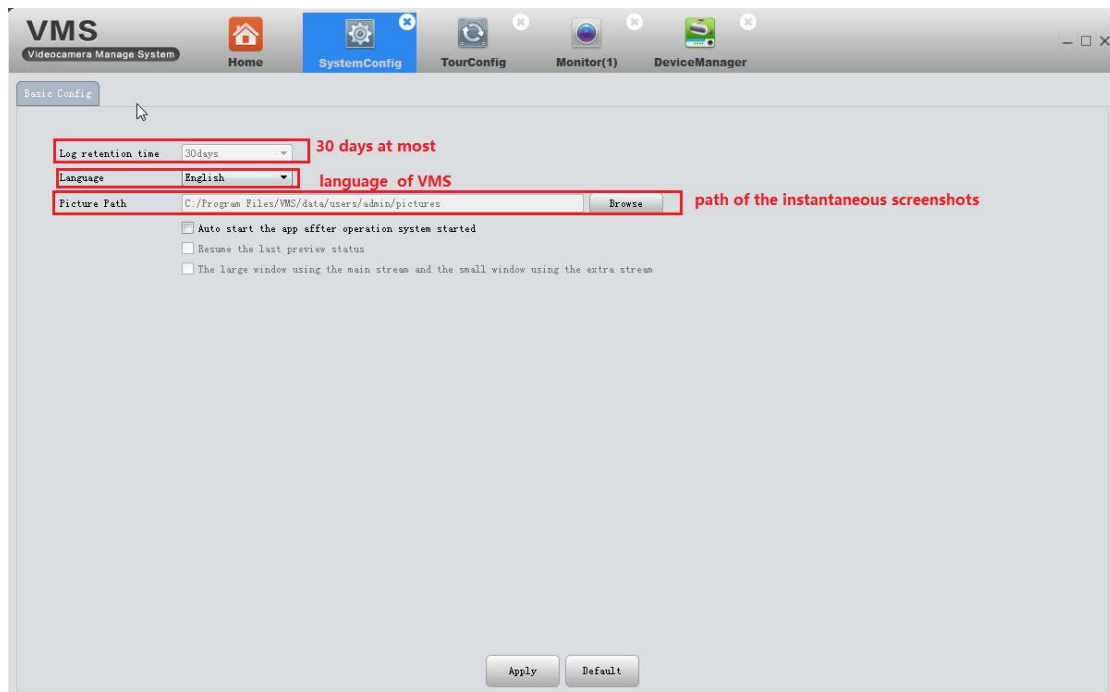
Add projects as the above pic shows.



2) On monitoring page, click tour icon to start.



## 3.12 System Config



## 3.13 Extensions

Map and cloud are not implemented at present.